

ALLVISION

LOCATION SHEETS

GTA – VANCOUVER – MONTRÉAL



ALLVISION

ALLVISION

LOCATION SHEETS



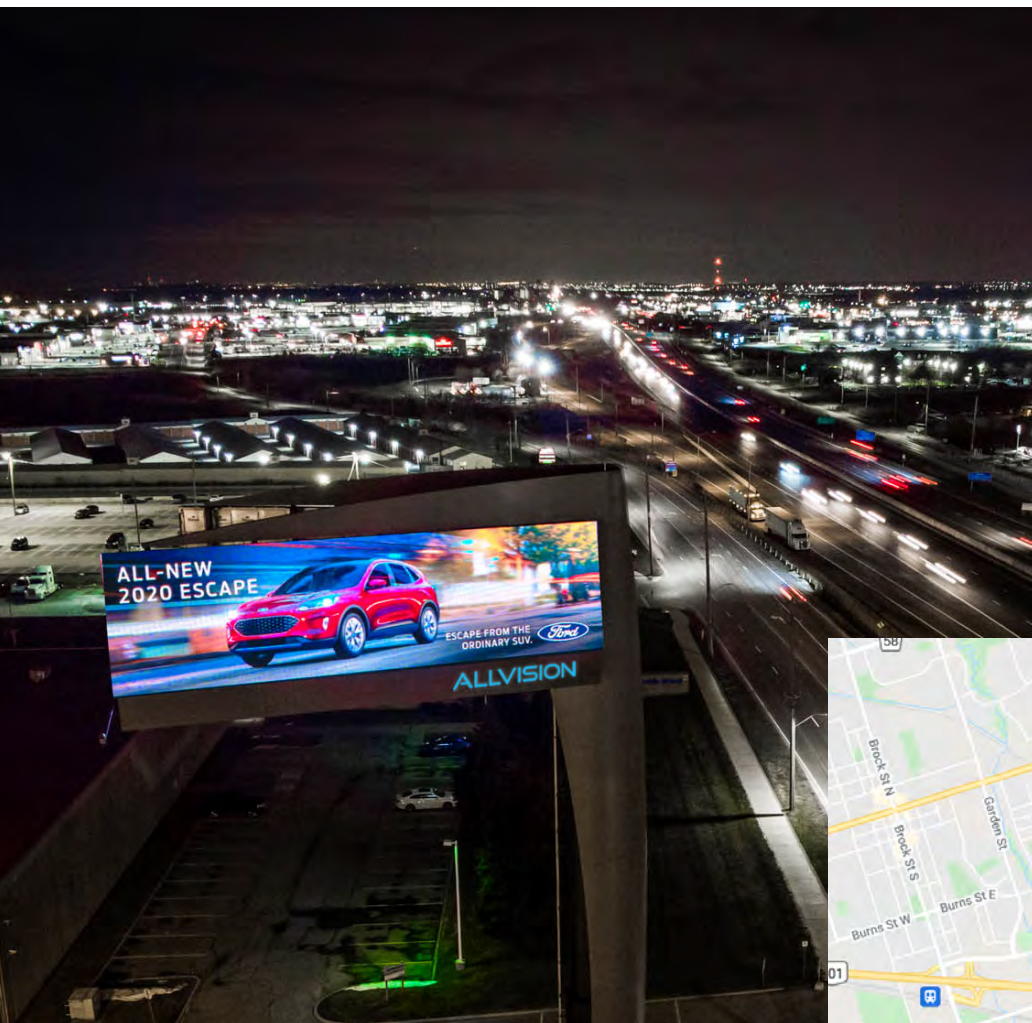
TORONTO CMA

TORONTO

ADT101

Hwy 401
E/O Thickson Road SS

14'H x 48'W • Facing EAST
1056 x 288 (pixels)



Latitude:
43.872485

Longitude:
-78.888273

102,494

Daily Impressions

ADT101 & ADT102 are located on one of the busiest parts of The King's Highway, Highway 401.

It's the primary route across Southern, Central and Eastern Ontario and considered a vital economic corridor.

Highway 401 is used by millions of motorists to travel across the province and with this Allvision board in your campaign, you can capture the attention of all those who drive it.



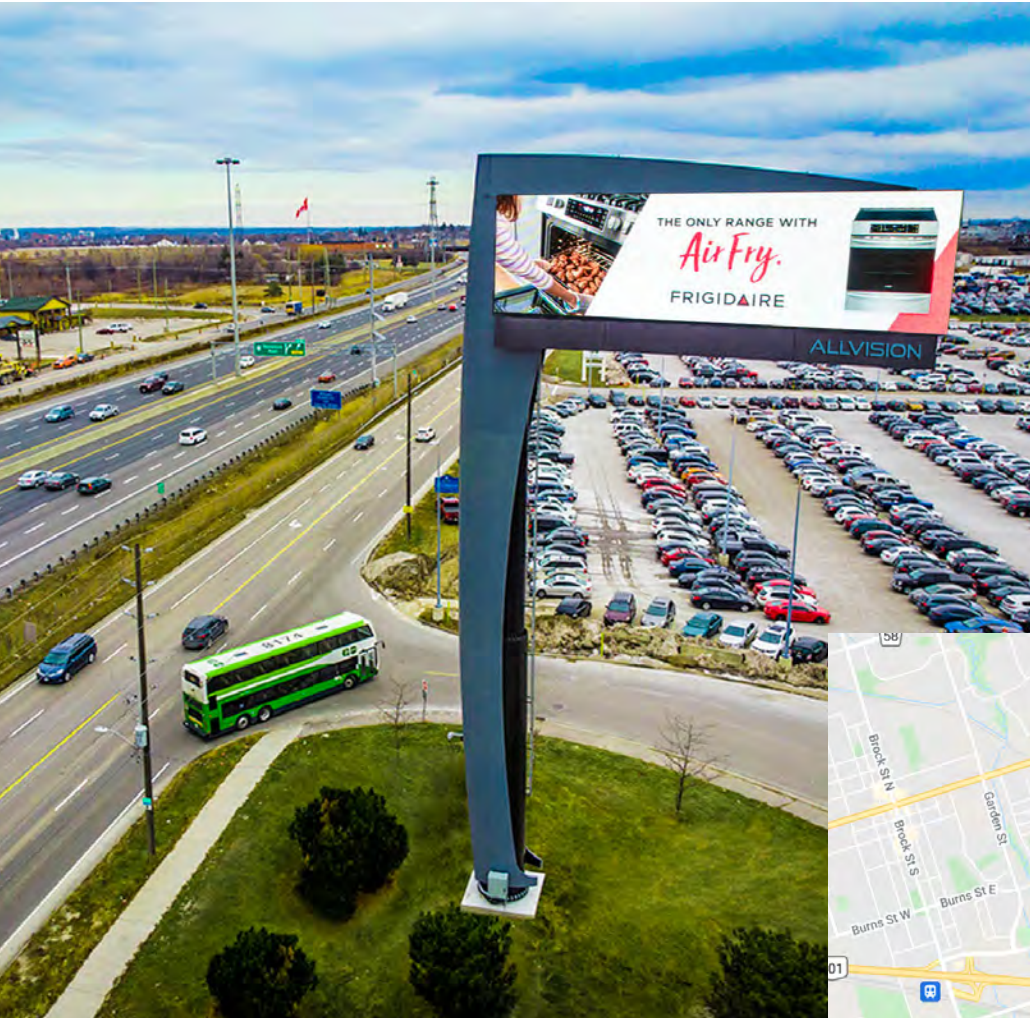
ALLVISION

TORONTO

ADT102

Hwy 401
E/O Thickson Road SS

14'H x 48'W • Facing WEST
1056 x 288 (pixels)



Latitude:
43.872485

Longitude:
-78.888273

102,494

Daily Impressions

ADT101 & ADT102 are located on one of the busiest parts of The King's Highway, Highway 401.

It's the primary route across Southern, Central and Eastern Ontario and considered a vital economic corridor.

Highway 401 is used by millions of motorists to travel across the province and with this Allvision board in your campaign, you can capture the attention of all those who drive it.



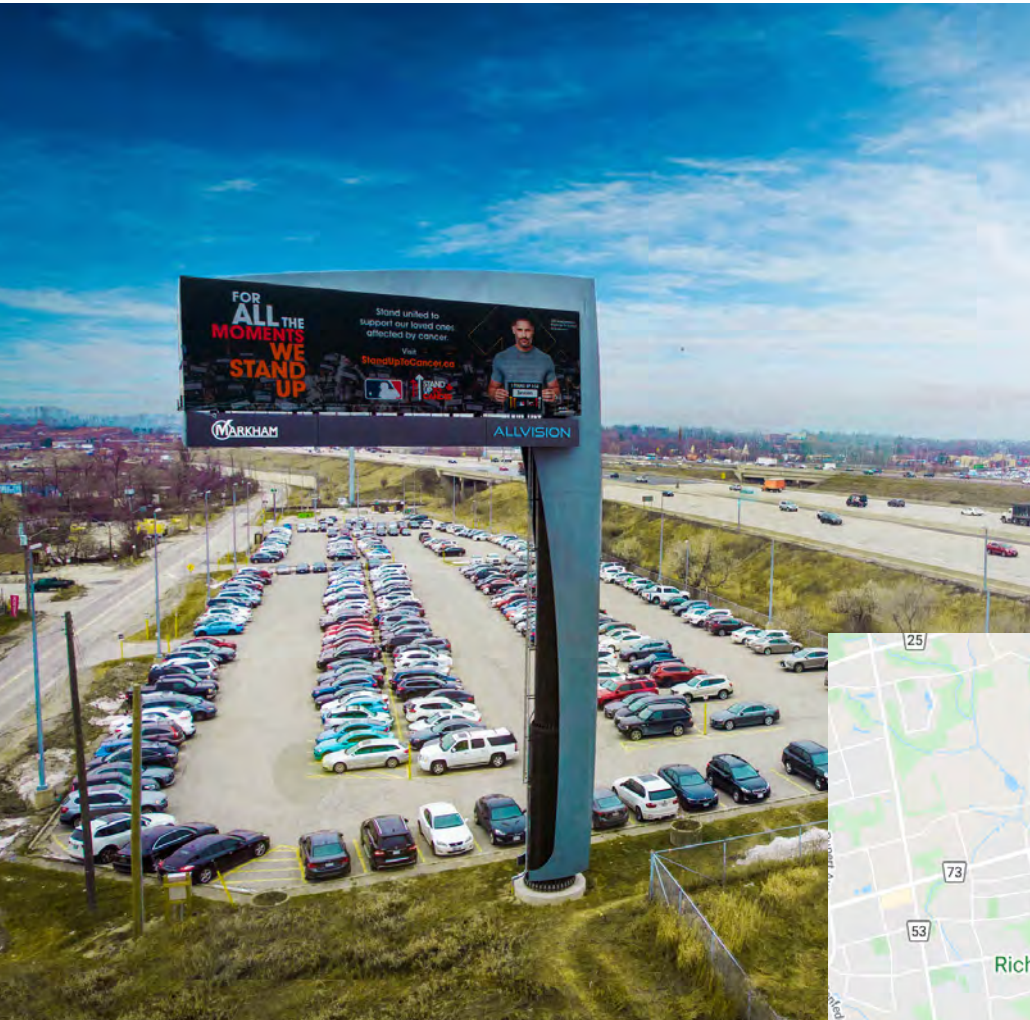
ALLVISION

TORONTO

ADT103

Hwy 407 875m
E/O Yonge St SS

14'H x 48'W • Facing EAST
1056 x 288 (pixels)



Latitude:
43.837230

Longitude:
-79.418236

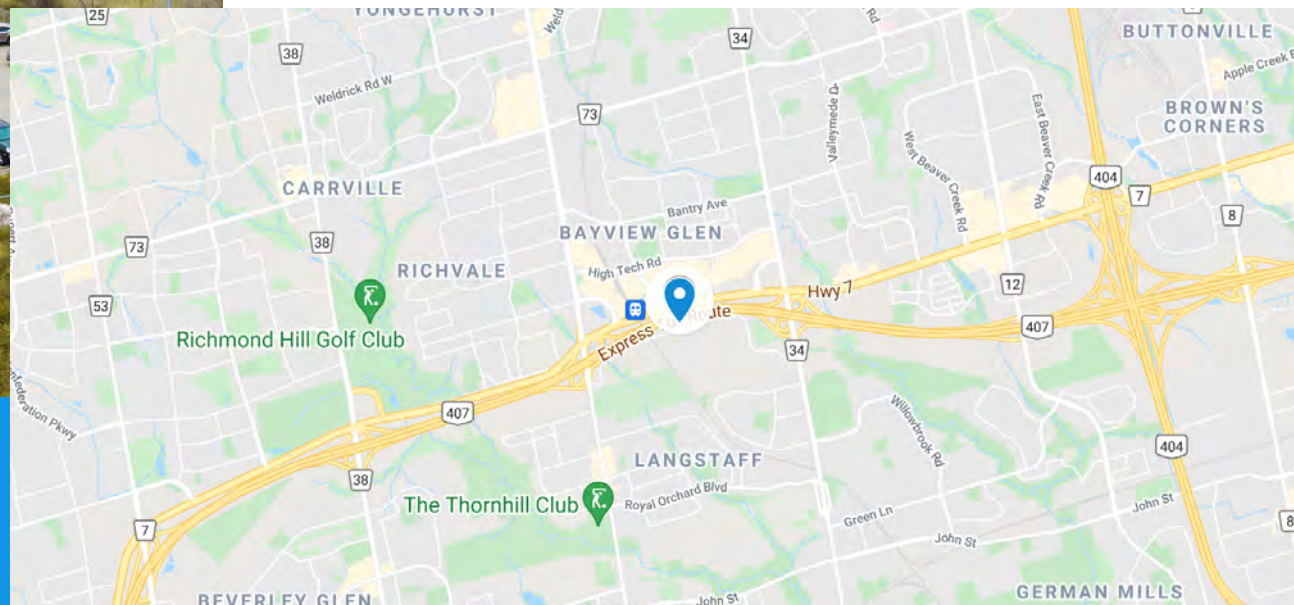
82,000

Daily Impressions

Exclusive location on the award-winning highway 407 ETR (Express Toll Route) the world's first electronically operated toll highway spanning the entire Greater Toronto Area.

Considered a luxury by affluent commuters who choose to avoid the congestion of other major highways to and from their places of work and home.

Capture the attention of this sophisticated audience with eye-catching creative and expand your reach.



ALLVISION

TORONTO

ADT104

Hwy 407 875m
E/O Yonge St SS

14'H x 48'W • Facing WEST
1056 x 288 (pixels)



Latitude:
43.837230

Longitude:
-79.418236

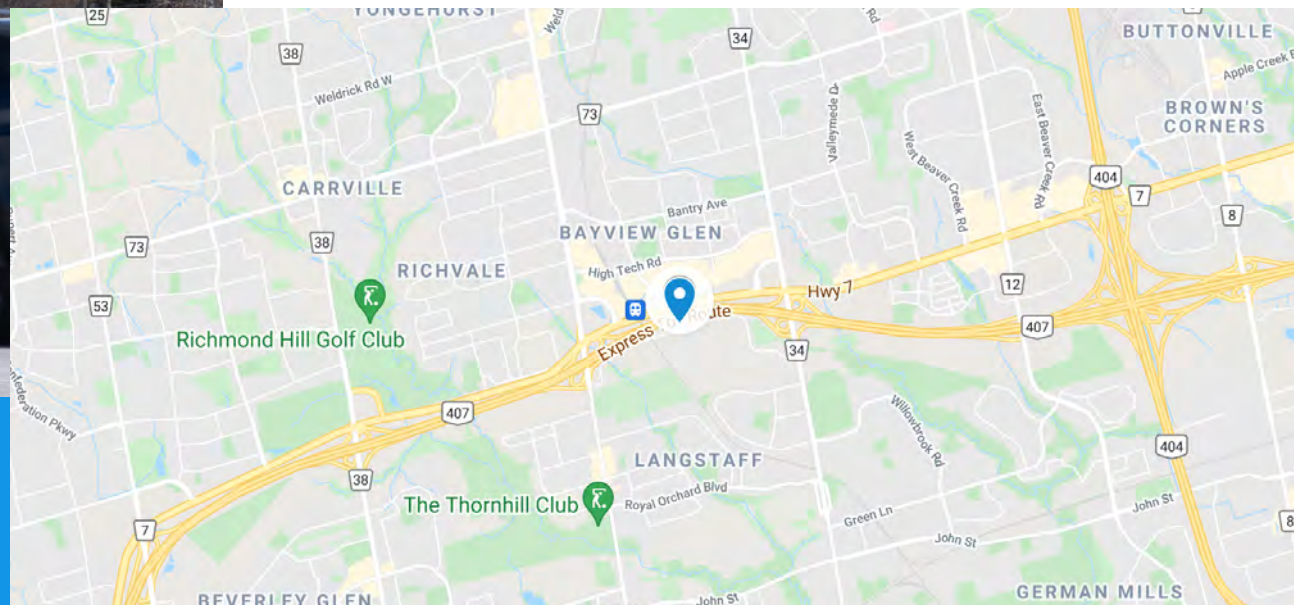
82,000

Daily Impressions

Exclusive location on the award-winning highway 407 ETR (Express Toll Route) the world's first electronically operated toll highway spanning the entire Greater Toronto Area.

Considered a luxury by affluent commuters who choose to avoid the congestion of other major highways to and from their places of work and home.

Capture the attention of this sophisticated audience with eye-catching creative and expand your reach.



ALLVISION

TORONTO

ADT105

Hwy 401 314m
W/O Islington Ave SS

14'H x 48'W • Facing EAST
1056 x 288 (pixels)

Latitude:
43.706299

Longitude:
-79.555299

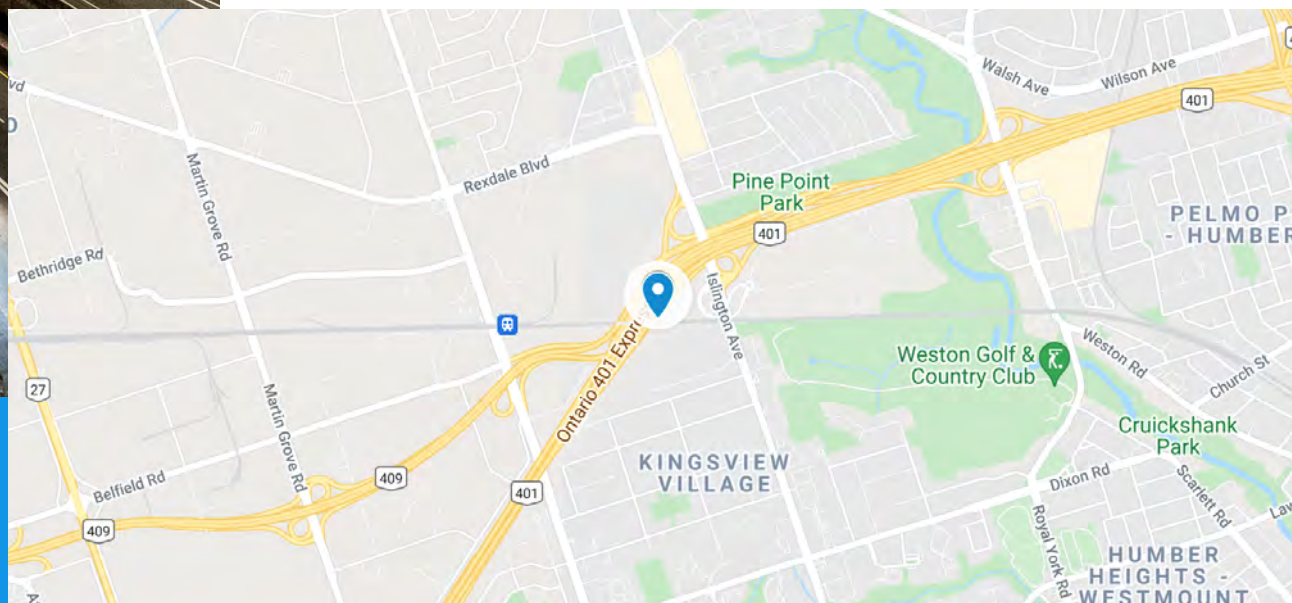
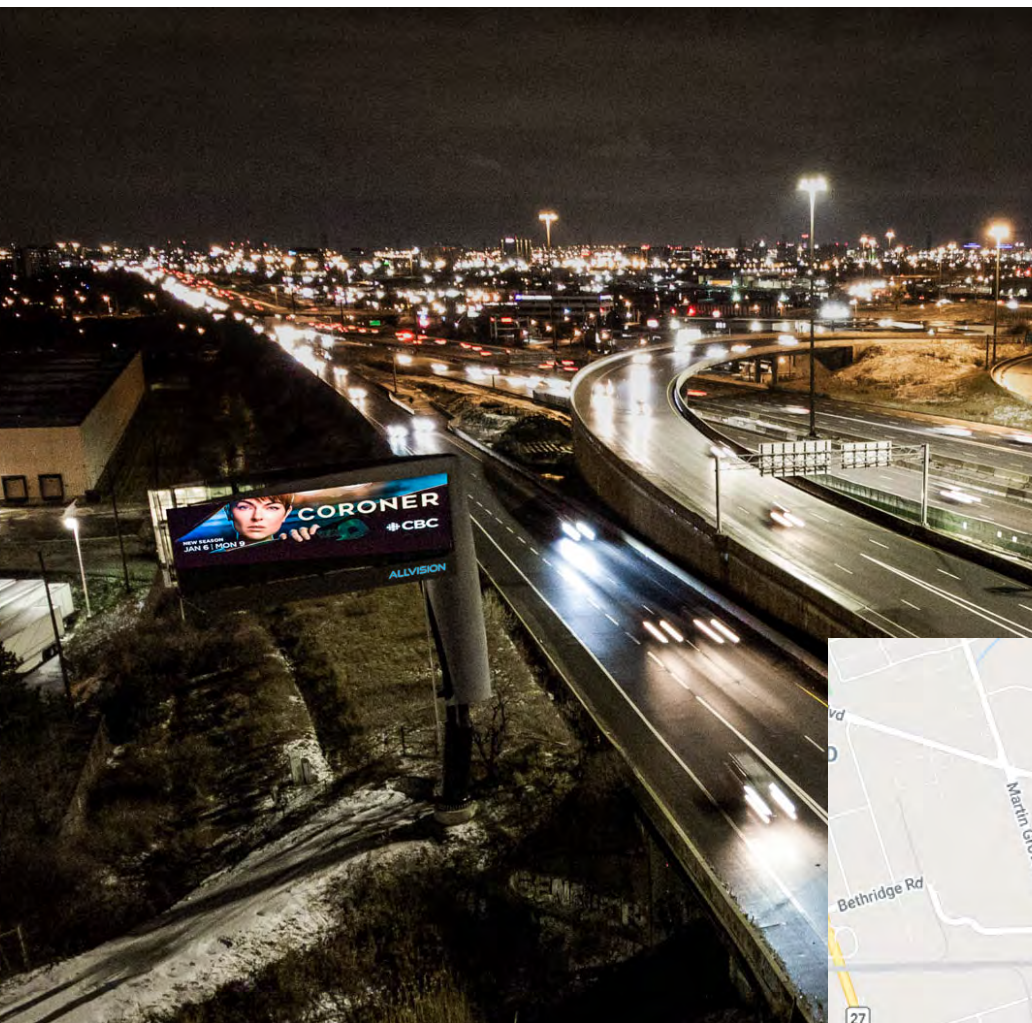
306,841

Daily Impressions

Adding to our impressive Etobicoke digital network are ADT105 & ADT106, two sides of a digital bulletin that stands out in our inventory.

This fantastic board is uniquely positioned at Highway 401 and Islington Ave, directly off of the heavily travelled meeting point of Highway 401 and Highway 409, ensuring that your eye-catching creative will be seen by thousands of commuters.

With the highest daily circulation in the Toronto CMA, these striking digital screens are an absolute must-have for your next campaign!



ALLVISION

TORONTO

ADT106

Hwy 401 314m
W/O Islington Ave SS

14'H x 48'W • Facing WEST
1056 x 288 (pixels)

Latitude:
43.706299

Longitude:
-79.555299

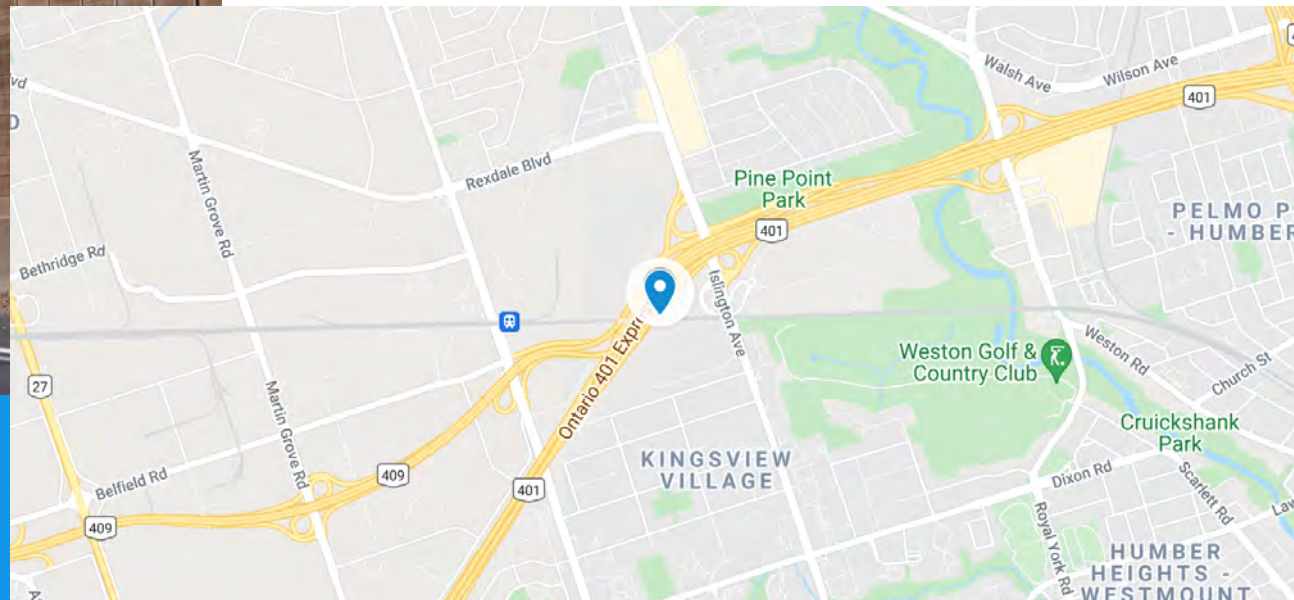
283,258

Daily Impressions

Adding to our impressive Etobicoke digital network are ADT105 & ADT106, two sides of a digital bulletin that stands out in our inventory.

This fantastic board is uniquely positioned at Highway 401 and Islington Ave, directly off of the heavily travelled meeting point of Highway 401 and Highway 409, ensuring that your eye-catching creative will be seen by thousands of commuters.

With the highest daily circulation in the Toronto CMA, these striking digital screens are an absolute must-have for your next campaign!



ALLVISION

TORONTO

ADT107

Hwy 401 @ Yorkdale Mall
E/O Keele St, SS

14'H x 48'W • Facing EAST
1056 x 288 (pixels)

Latitude:

43.724347

Longitude:

-79.472403

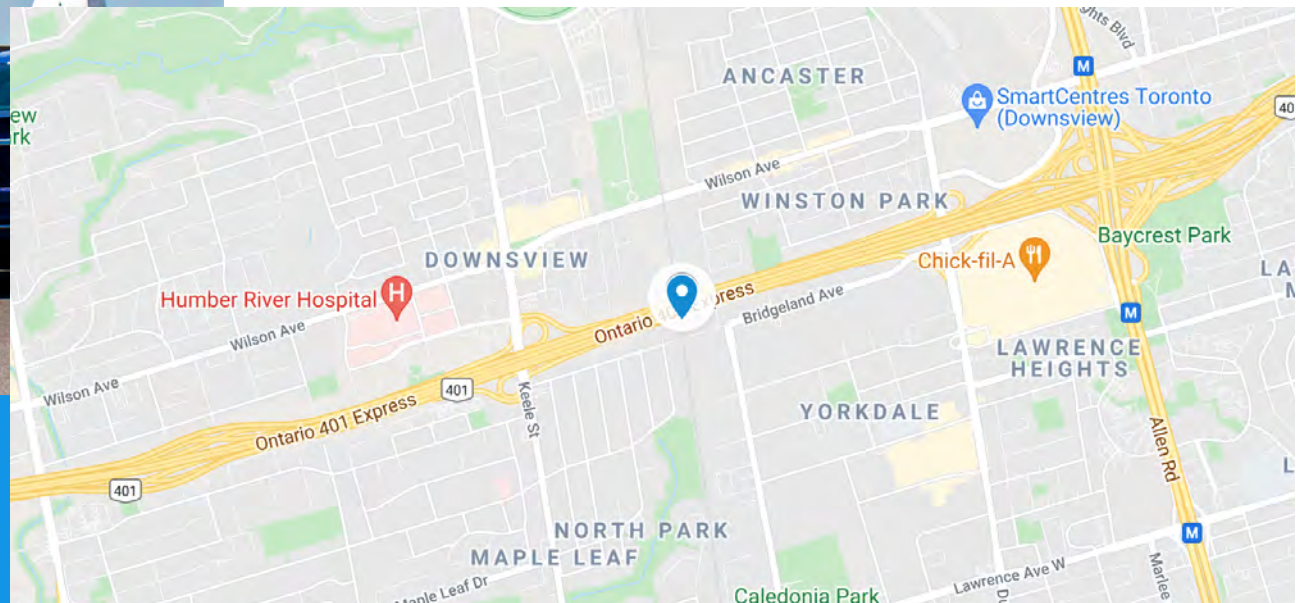
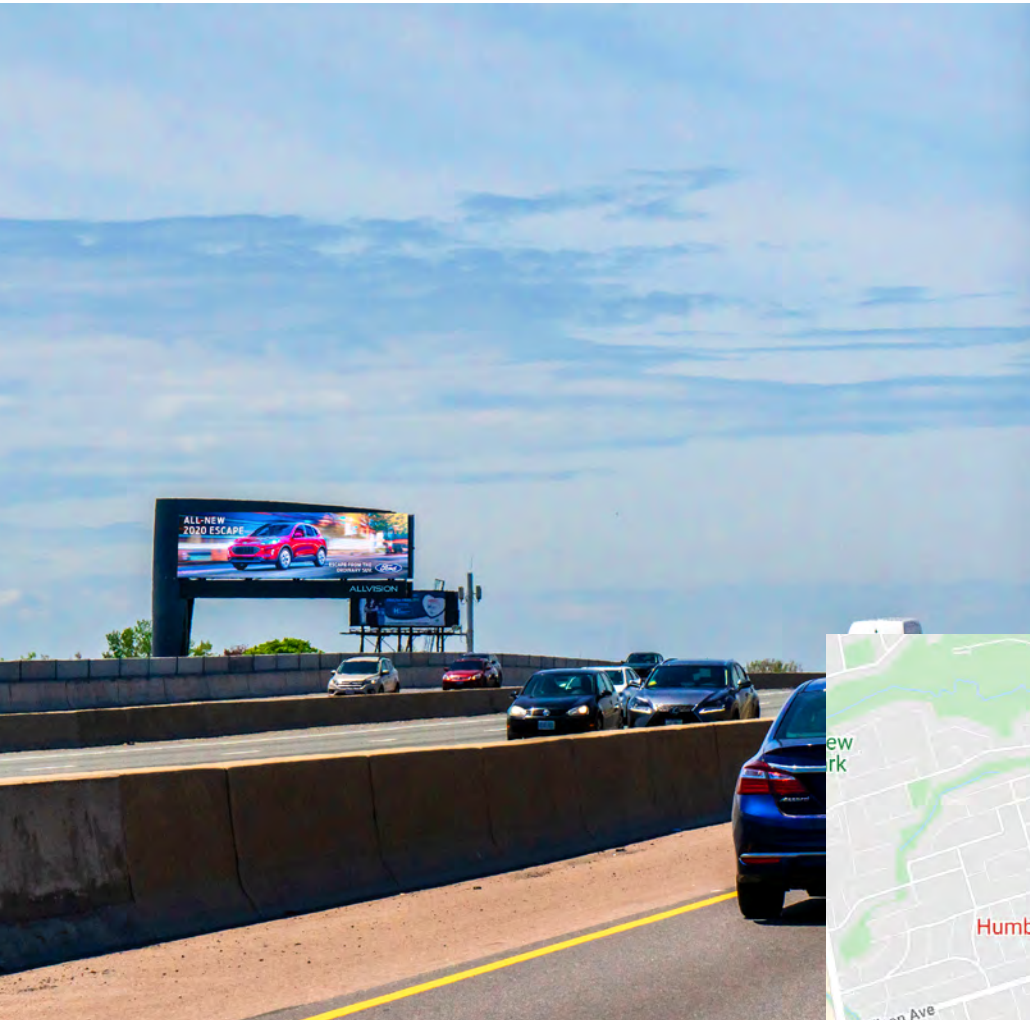
281,083

Daily Impressions

A campaign wouldn't be complete without this extraordinary double-sided highway digital board!

It is positioned at Highway 401 and Keele St., and is among our most-seen boards.

ADT107 & ADT108 sit on the south side of highway 401, hitting heavy traffic flowing to and from Yorkdale Shopping Centre - one of the largest premier shopping malls in the country with the highest sales per unit area of any mall in Canada.



ALLVISION

TORONTO

ADT108

Hwy 401 @ Yorkdale Mall
E/O Keele St, SS

14'H x 48'W • Facing WEST
1056 x 288 (pixels)

Latitude:

43.724347

Longitude:

-79.472403

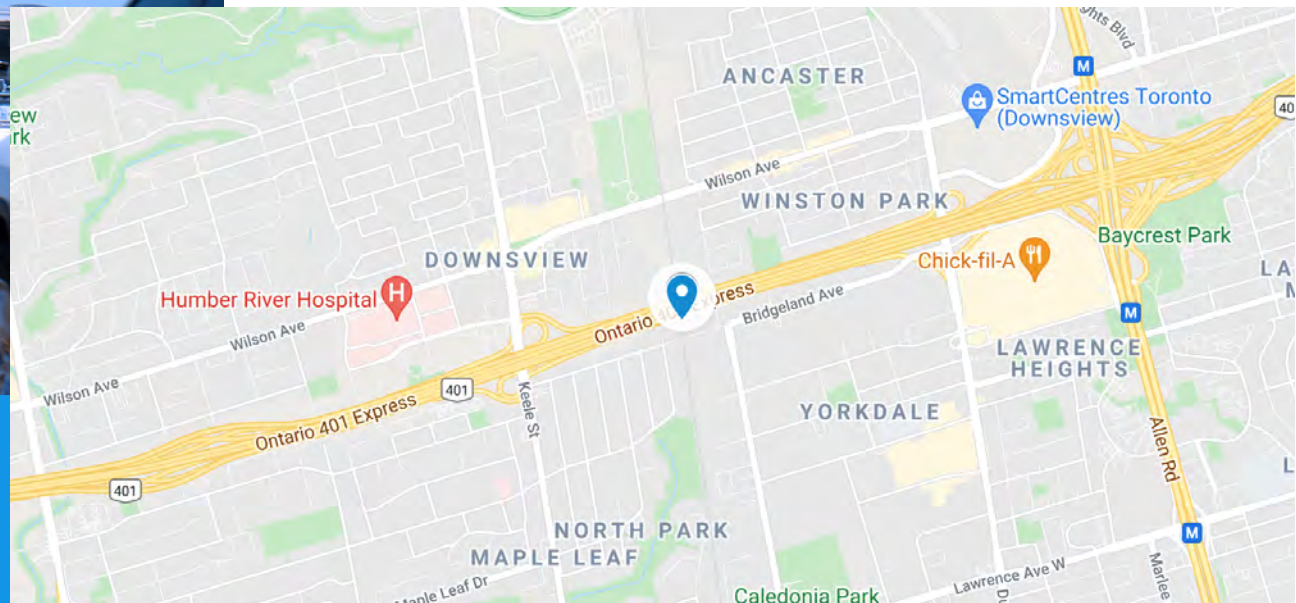
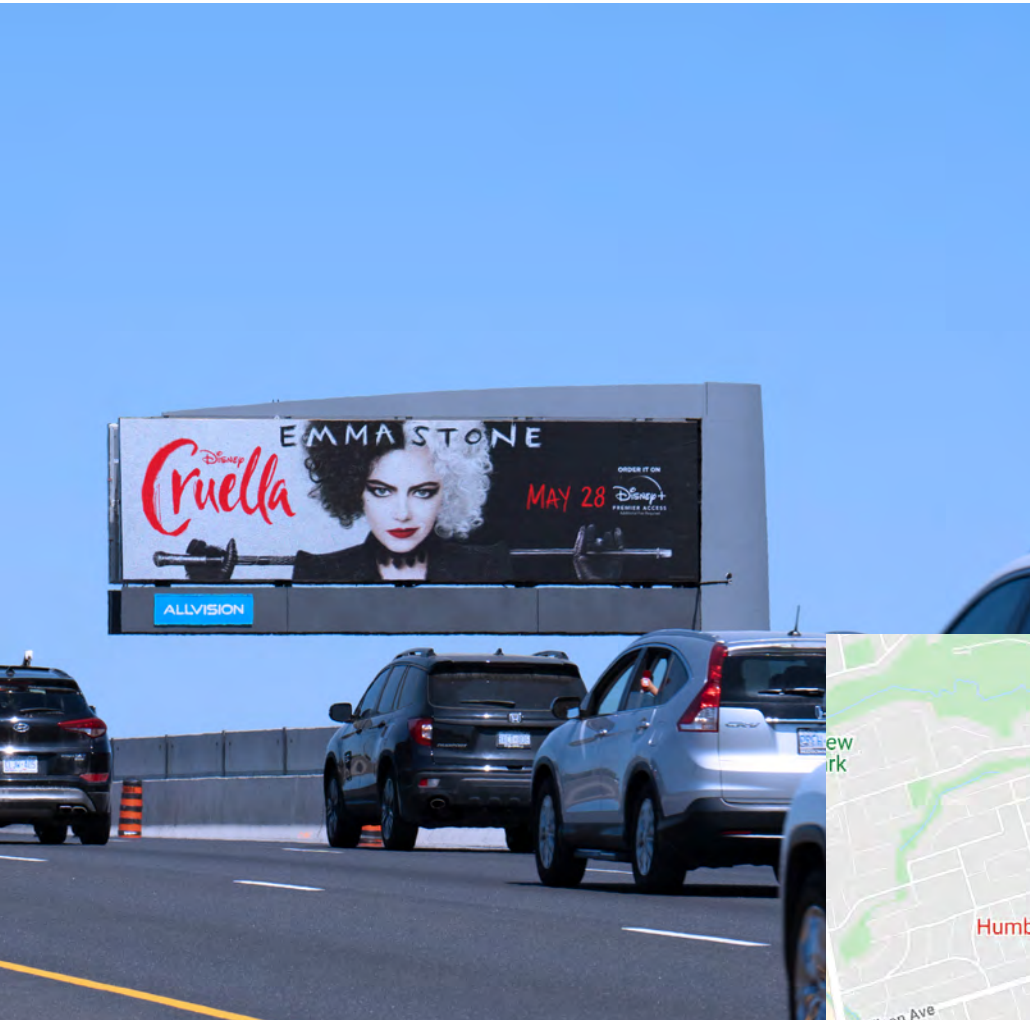
281,083

Daily Impressions

A campaign wouldn't be complete without this extraordinary double-sided highway digital board!

It is positioned at Highway 401 and Keele St., and is among our most-seen boards.

ADT107 & ADT108 sit on the south side of highway 401, hitting heavy traffic flowing to and from Yorkdale Shopping Centre - one of the largest premier shopping malls in the country with the highest sales per unit area of any mall in Canada.



ALLVISION

TORONTO

ADT109

Hwy 427 & Hwy 409
N/O Pearson Airport, WS

14'H x 48'W • Facing NORTH
1056 x 288 (pixels)

Latitude:
43.706304

Longitude:
-79.613915

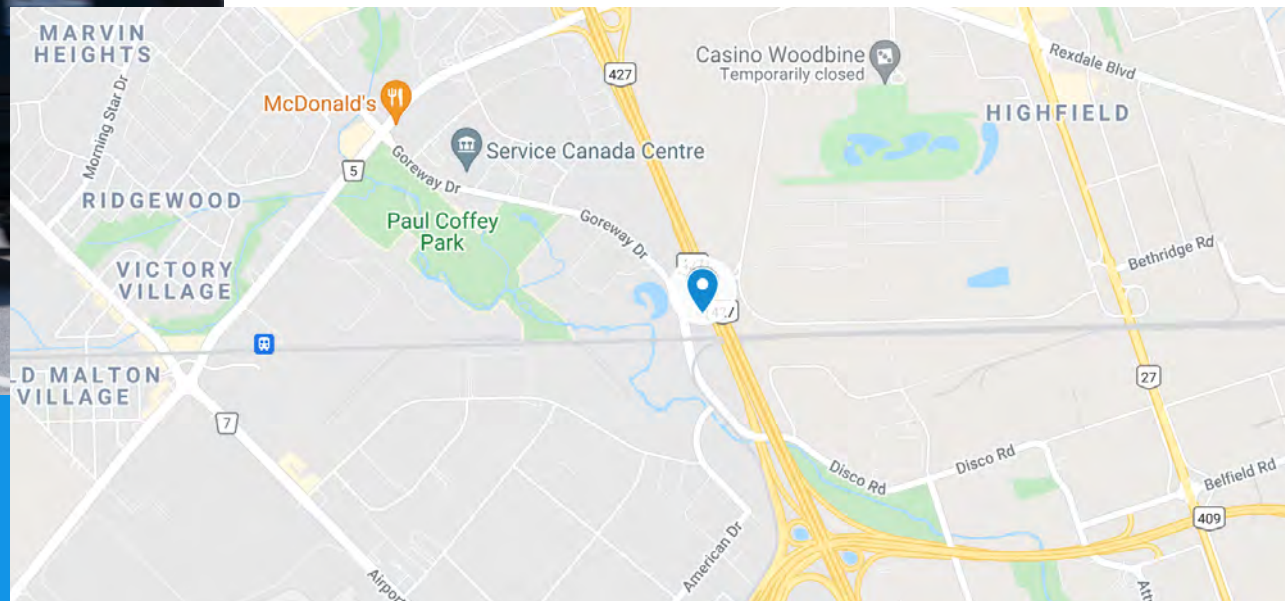
105,053

Daily Impressions

ADT109 & ADT110 are perhaps the most visible boards on any 400 series highway!

This double-sided 14'x48' digital screen is uniquely positioned at Highway 427 near Toronto's Pearson International Airport, capturing commuters heading south along the 427 toward Highways 409 and 401, and north to Derry Road and Rexdale Blvd.

Illuminated 24 hours a day and reaching a high volume of local traffic, these stand-out digital screens are a must-have for your next campaign!



ALLVISION

TORONTO

ADT110

Hwy 427 & Hwy 409
N/O Pearson Airport, WS

14'H x 48'W • Facing SOUTH
1056 x 288 (pixels)

Latitude:
43.706304

Longitude:
-79.613915

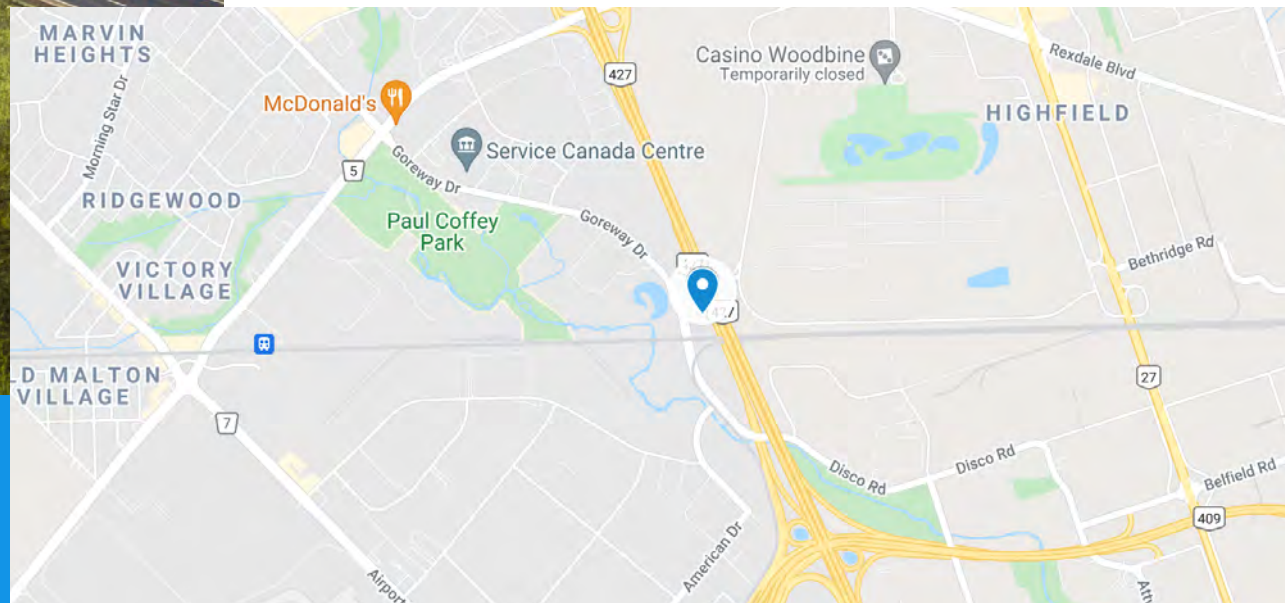
105,053

Daily Impressions

ADT109 & ADT110 are perhaps the most visible boards on any 400 series highway!

This double-sided 14'x48' digital screen is uniquely positioned at Highway 427 near Toronto's Pearson International Airport, capturing commuters heading south along the 427 toward Highways 409 and 401, and north to Derry Road and Rexdale Blvd.

Illuminated 24 hours a day and reaching a high volume of local traffic, these stand-out digital screens are a must-have for your next campaign!



ALLVISION

TORONTO

ADT111

Hwy 407 1.22km
S/O Hwy 401 ES

14'H x 48'W • Facing NORTH
1056 x 288 (pixels)

Latitude:
43.579576

Longitude:
-79.800704

108,300
Daily Impressions

ADT111 & ADT112 are two faces of a bold structure that greets commuters as they travel across the GTA on this 400 Series Highway.

This towering digital billboard reaches a wide range of audiences, ensuring long term presence and tremendous visibility for your brand.

The screens are strategically located on Highway 407 south of Highway 401, just south of the popular Toronto Premium Outlet mall in Halton Hills. It captures traffic heading to and from the city of Mississauga and the rapidly expanding town of Milton.



ALLVISION

TORONTO

ADT112

Hwy 407 1.22km
S/O Hwy 401 ES

14'H x 48'W • Facing SOUTH
1056 x 288 (pixels)



Latitude:
43.579576

Longitude:
-79.800704

108,300

Daily Impressions

ADT111 & ADT112 are two faces of a bold structure that greets commuters as they travel across the GTA on this 400 Series Highway.

This towering digital billboard reaches a wide range of audiences, ensuring long term presence and tremendous visibility for your brand.

The screens are strategically located on Highway 407 south of Highway 401, just south of the popular Toronto Premium Outlet mall in Halton Hills. It captures traffic heading to and from the city of Mississauga and the rapidly expanding town of Milton.



ALLVISION

TORONTO

ADT133

Hwy 403
W/O Creditview Rd

14'H x 48'W • Facing EAST
1056 x 288 (pixels)

Latitude:
43.569329

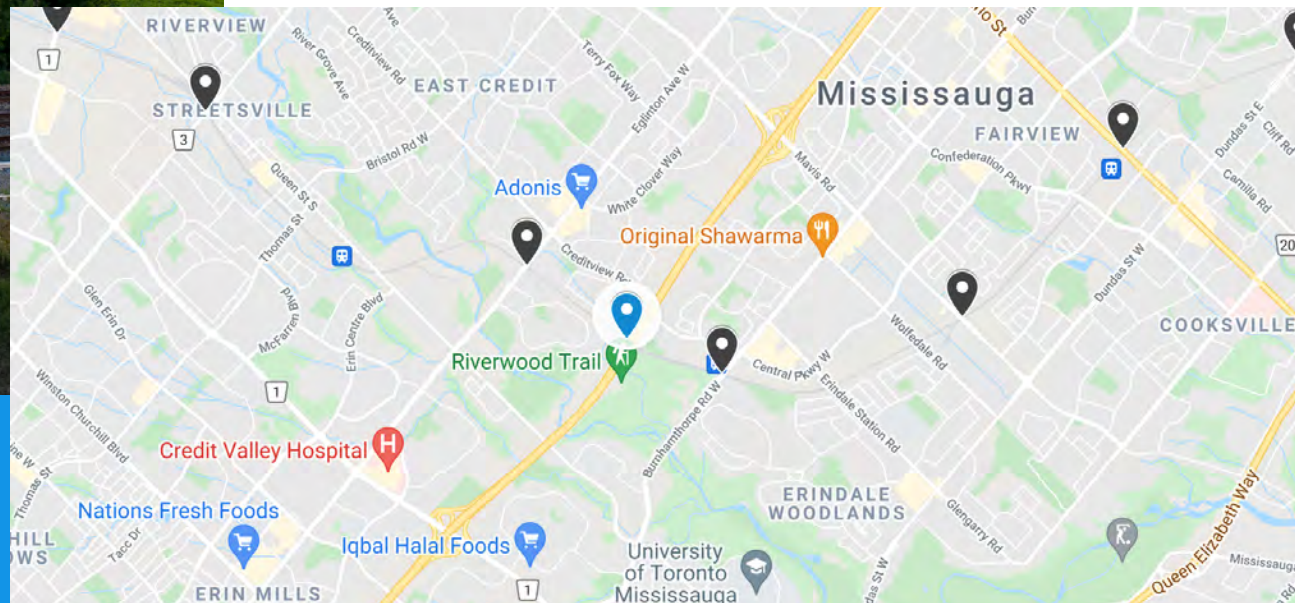
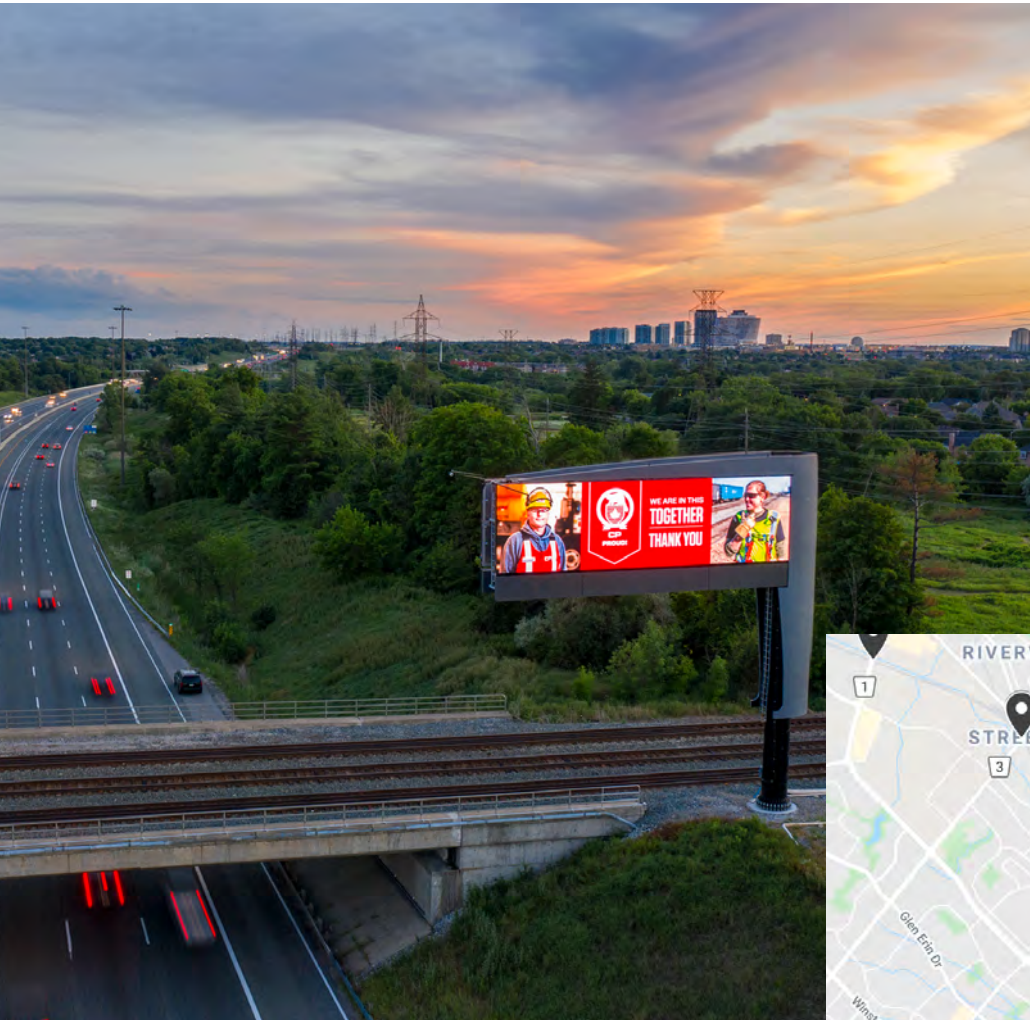
Longitude:
-79.676945

154,391
Daily Impressions

The Ontario 403 Highway is one of the biggest and busiest roadways in the country. Allvision is incredibly proud to offer a premier 14' x 48' billboard that positions our advertisers at the crux of this superhighway.

This portion of the 403 has a total of 8 lanes, complete with two High Occupancy lanes to move commuters from Hamilton/Burlington/Oakville to Mississauga and the Greater Toronto Area.

ADT133 & ADT134 tower above all who take this route, with each face making well over 125,000 impressions a day.



ALLVISION

TORONTO

ADT134

Hwy 403
W/O Creditview Rd

14'H x 48'W • Facing WEST
1056 x 288 (pixels)

Latitude:
43.569329

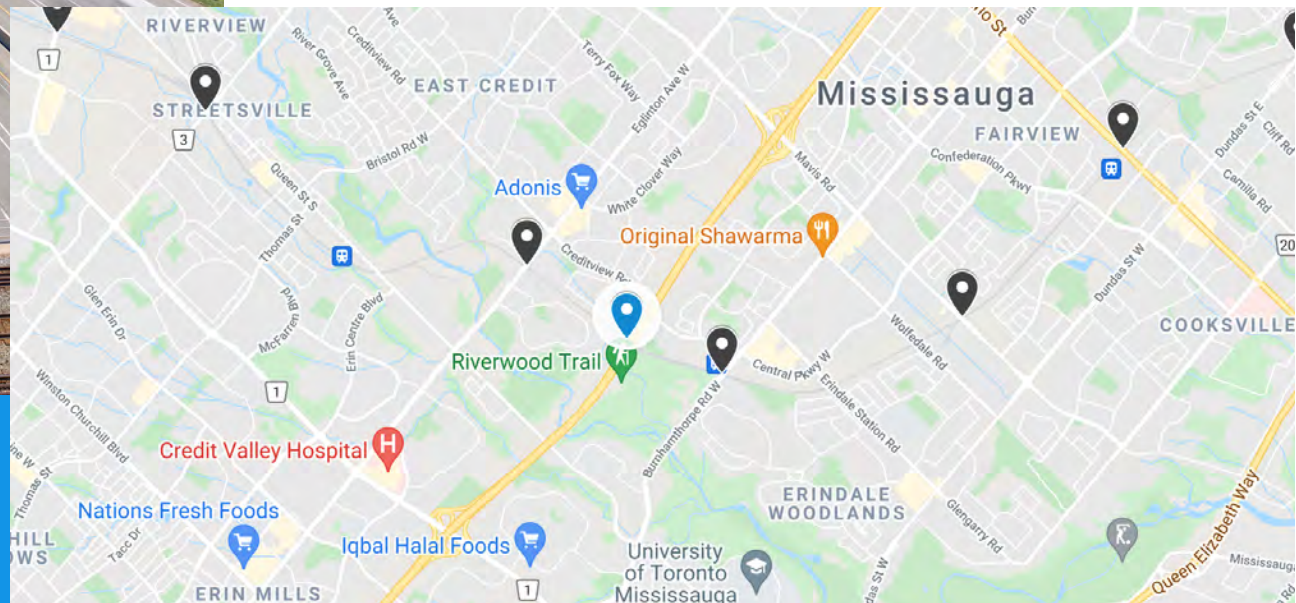
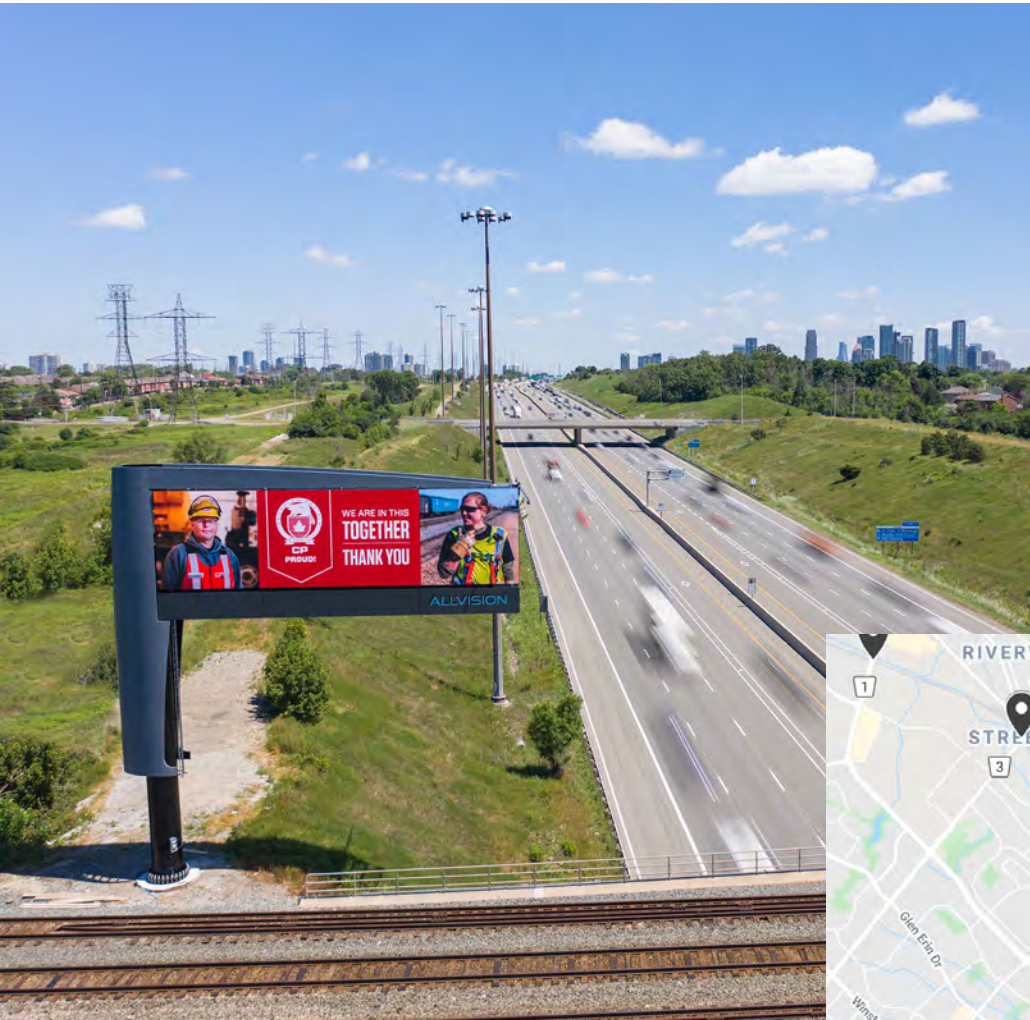
Longitude:
-79.676945

129,736
Daily Impressions

The Ontario 403 Highway is one of the biggest and busiest roadways in the country. Allvision is incredibly proud to offer a premier 14' x 48' billboard that positions our advertisers at the crux of this superhighway.

This portion of the 403 has a total of 8 lanes, complete with two High Occupancy lanes to move commuters from Hamilton/Burlington/Oakville to Mississauga and the Greater Toronto Area.

ADT133 & ADT134 tower above all who take this route, with each face making well over 125,000 impressions a day.



ALLVISION

TORONTO

ADT135

Hwy 401
E/O Kennedy Rd

14'H x 48'W • Facing EAST
1056 x 288 (pixels)

Latitude:
43.775555

Longitude:
-79.279343

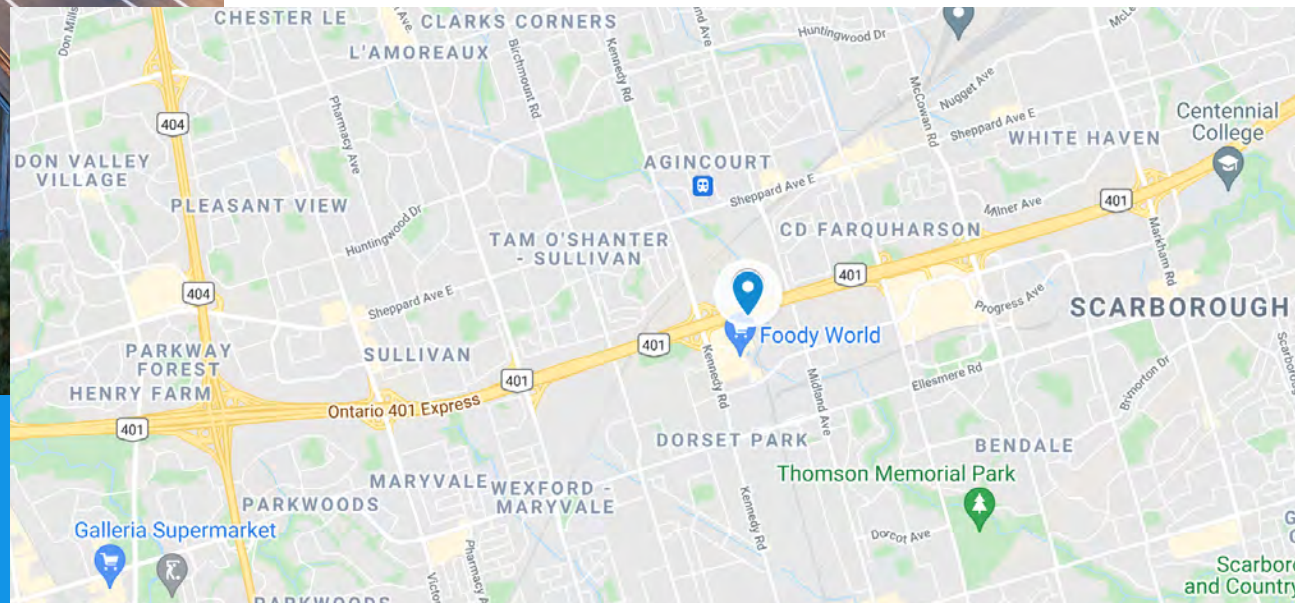
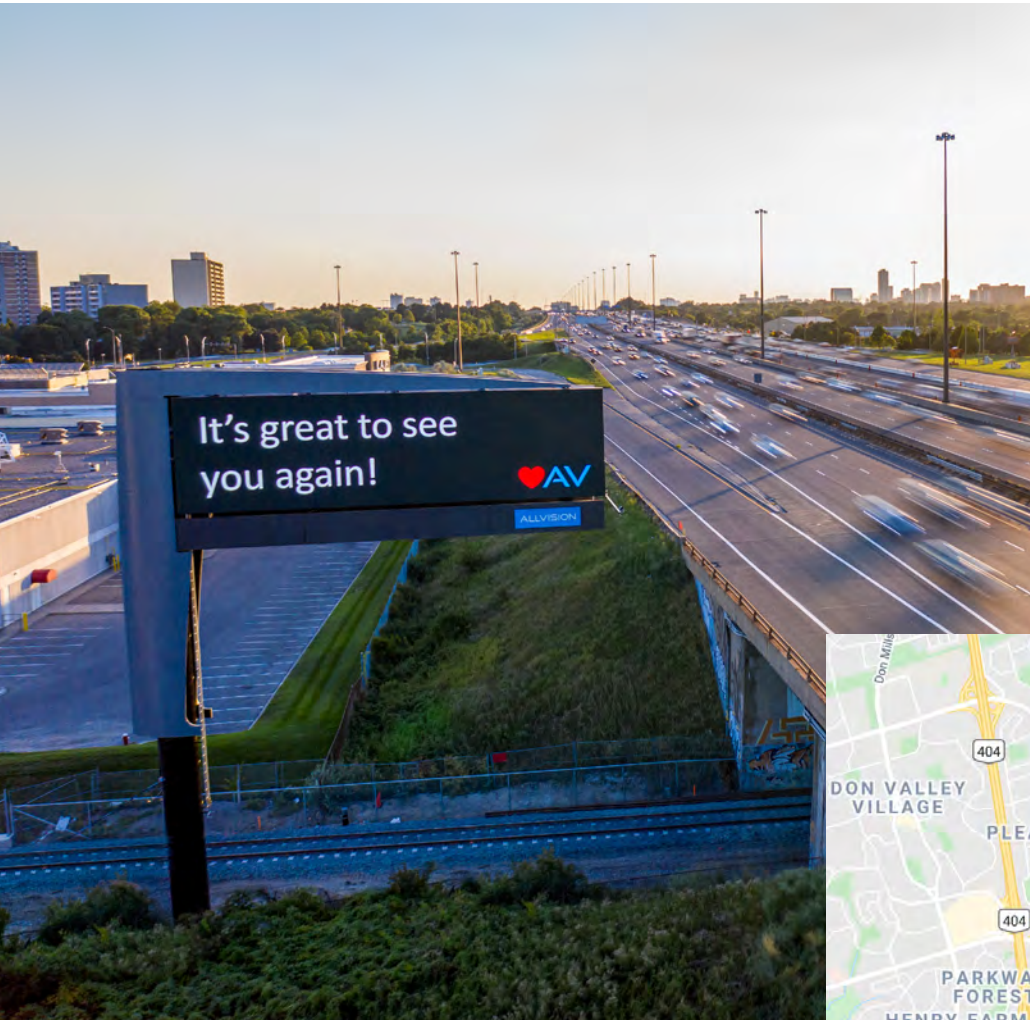
239,250

Daily Impressions

Located just a few kilometers East of the Don Valley Parkway, the Kennedy and 401 Superboard continues to augment the cross market coverage Allvision has created with its Highway Network.

With limited inventory on Canada's busiest highway, this high impression board is within close proximity of Scarborough Town Centre and compliments the Highway Network coverage from Oshawa in the east to Mississauga in the West.

With daily impression counts above 200,000, this Superboard location is a must have in a Highway Network buy.



ALLVISION

TORONTO

ADT136

Hwy 401
E/O Kennedy Rd

14'H x 48'W • Facing WEST
1056 x 288 (pixels)

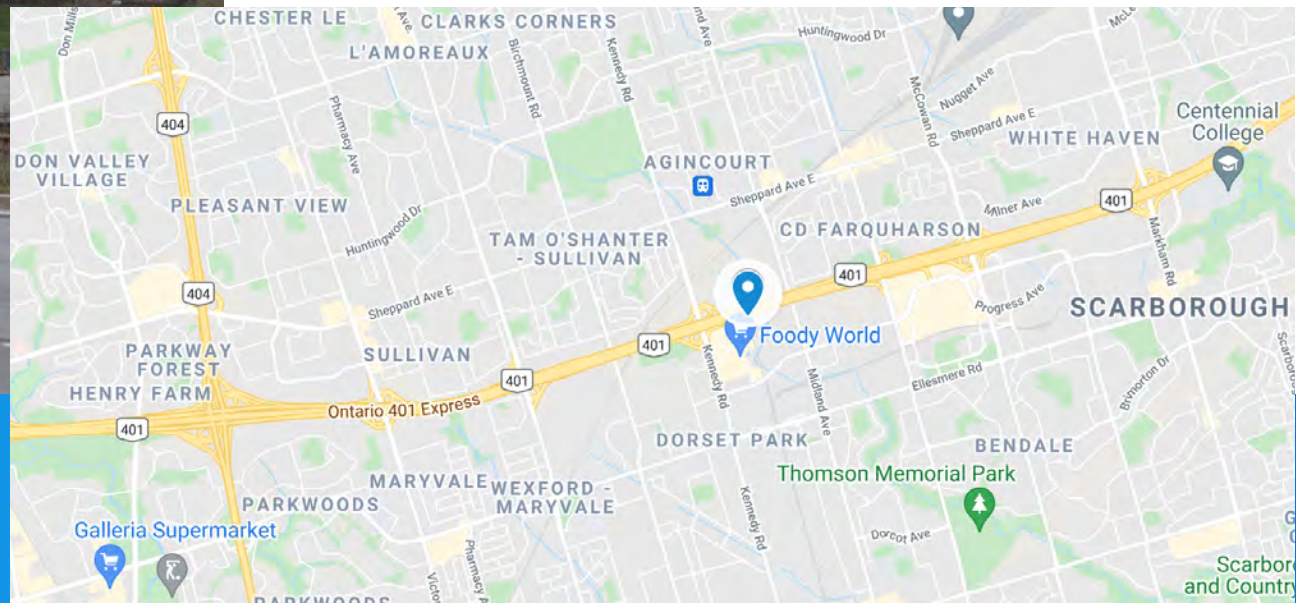
Latitude:
43.775555
Longitude:
-79.279343

239,250
Daily Impressions

Located just a few kilometers East of the Don Valley Parkway, the Kennedy and 401 Superboard continues to augment the cross market coverage Allvision has created with its Highway Network.

With limited inventory on Canada's busiest highway, this high impression board is within close proximity of Scarborough Town Centre and compliments the Highway Network coverage from Oshawa in the east to Mississauga in the West.

With daily impression counts above 200,000, this Superboard location is a must have in a Highway Network buy.



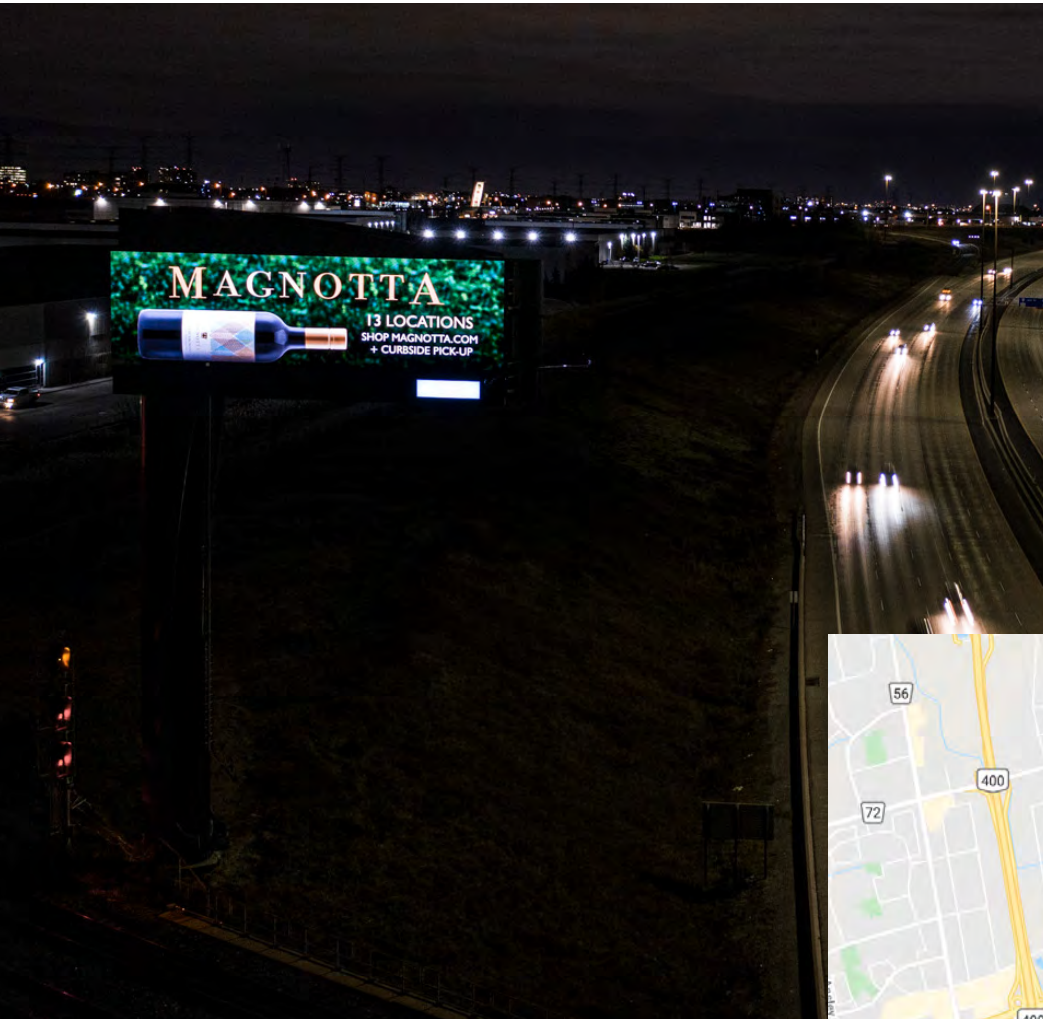
ALLVISION

TORONTO

ADT139

Hwy 407
E/O Keele St.

14'H x 48'W • Facing EAST
1056 x 288 (pixels)



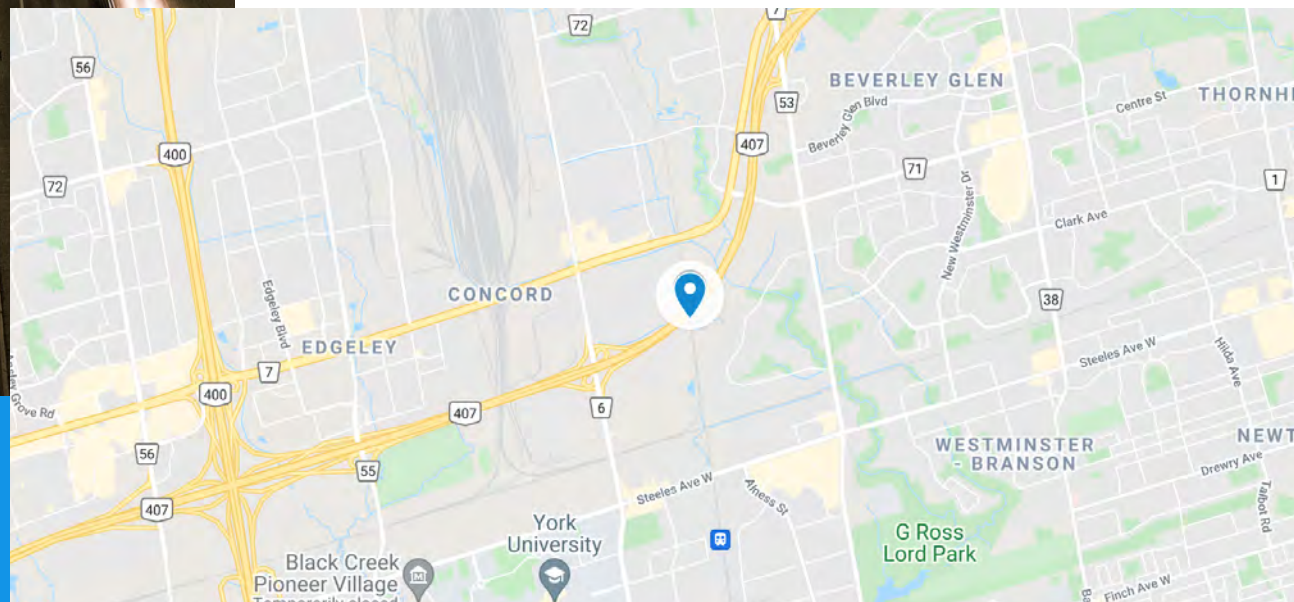
Latitude:
43.7962979
Longitude:
-79.4870150

100,000
Daily Impressions

Vaughan is the 5th largest city in the Greater Toronto Area and an Entertainment, Shopping and Cultural gem.

It is home to Canada's Wonderland, Vaughan Mills and the McMichael Canadian Art Collection. Vaughan boasts a robust economy and is a sought after city by both businesses and residents.

With communities like Kleinburg, Woodbridge, Thornhill and Maple, Vaughan has emerged as a destination city to work, live, shop and play.



ALLVISION

TORONTO

ADT140

Hwy 407
E/O Keele St.

14'H x 48'W • Facing WEST
1056 x 288 (pixels)



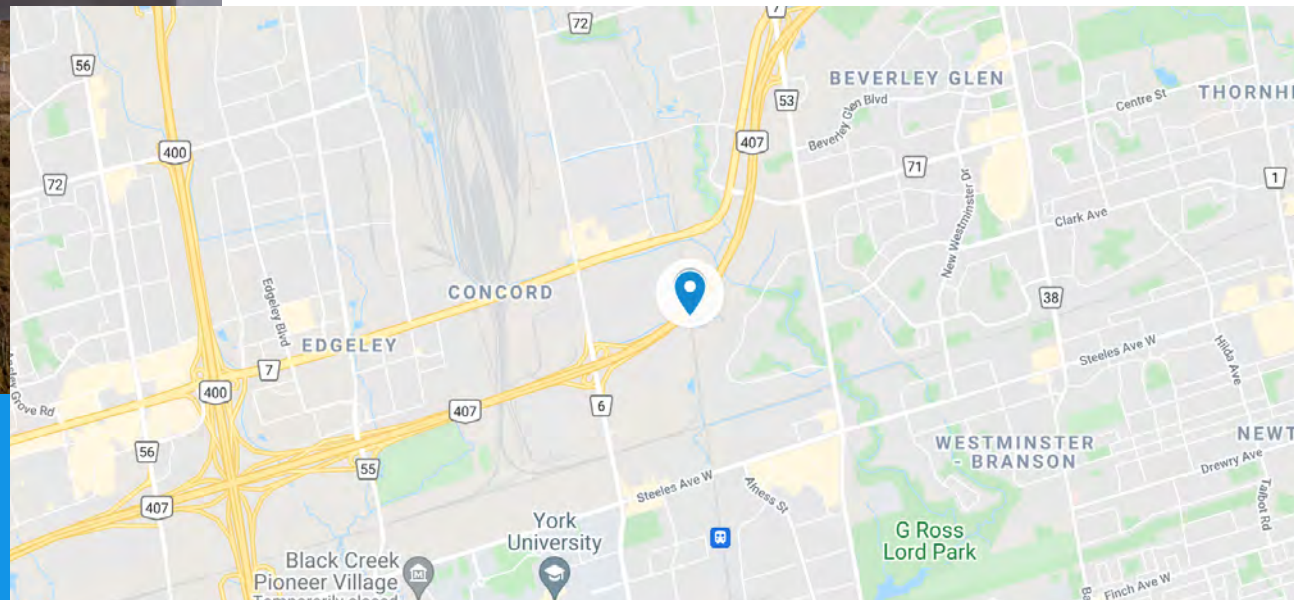
Latitude:
43.7962979
Longitude:
-79.4870150

100,000
Daily Impressions

Vaughan is the 5th largest city in the Greater Toronto Area and an Entertainment, Shopping and Cultural gem.

It is home to Canada's Wonderland, Vaughan Mills and the McMichael Canadian Art Collection. Vaughan boasts a robust economy and is a sought after city by both businesses and residents.

With communities like Kleinburg, Woodbridge, Thornhill and Maple, Vaughan has emerged as a destination city to work, live, shop and play.



ALLVISION

ALLVISION

LOCATION SHEETS



MISSISSAUGA

TORONTO

ADT113

Britannia Rd W
S/O Queen St

8'H x 29'W • Facing EAST
644 x 196 (pixels)



Latitude:

49.587490

Longitude:

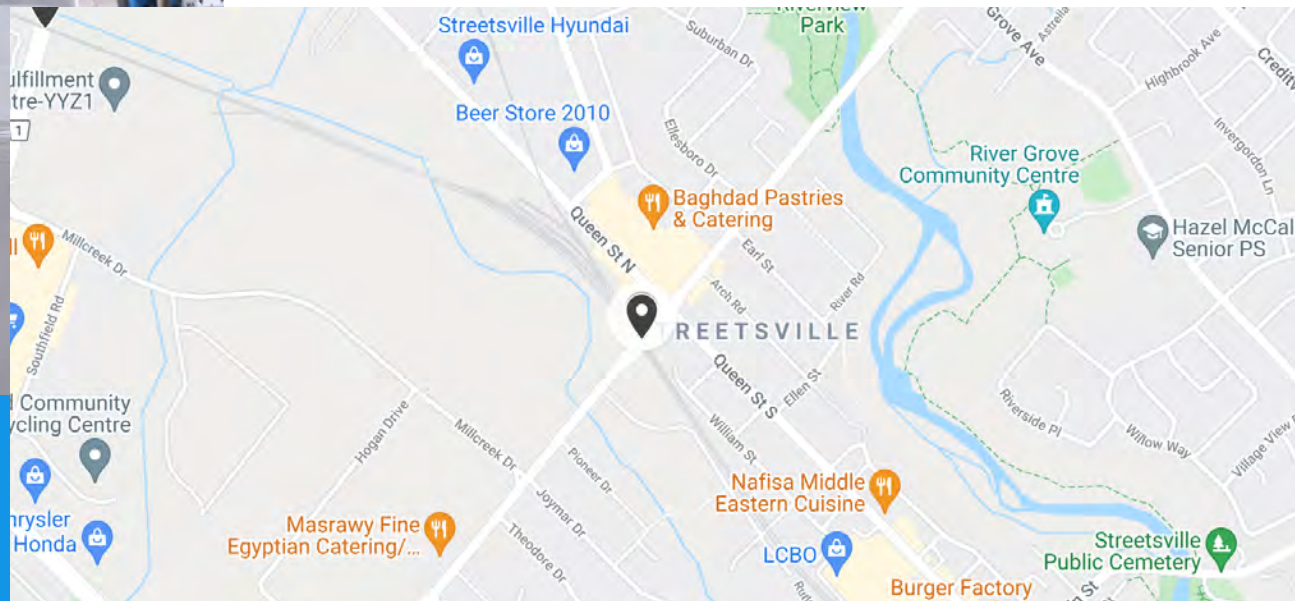
-79.723243

28,700

Daily Impressions

Located in 'Streetsville,' ADT113 & ADT114 are located in the cultural heart of Mississauga.

This unmissable board is at Britannia Rd W and Queen St, in close proximity to Home Hardware and auto body shops, and captures Westbound traffic along Britannia heading from highway 407.



ALLVISION

TORONTO

ADT114

Britannia Rd W
S/O Queen St

8'H x 29'W • Facing WEST
644 x 196 (pixels)



Latitude:

43.587490

Longitude:

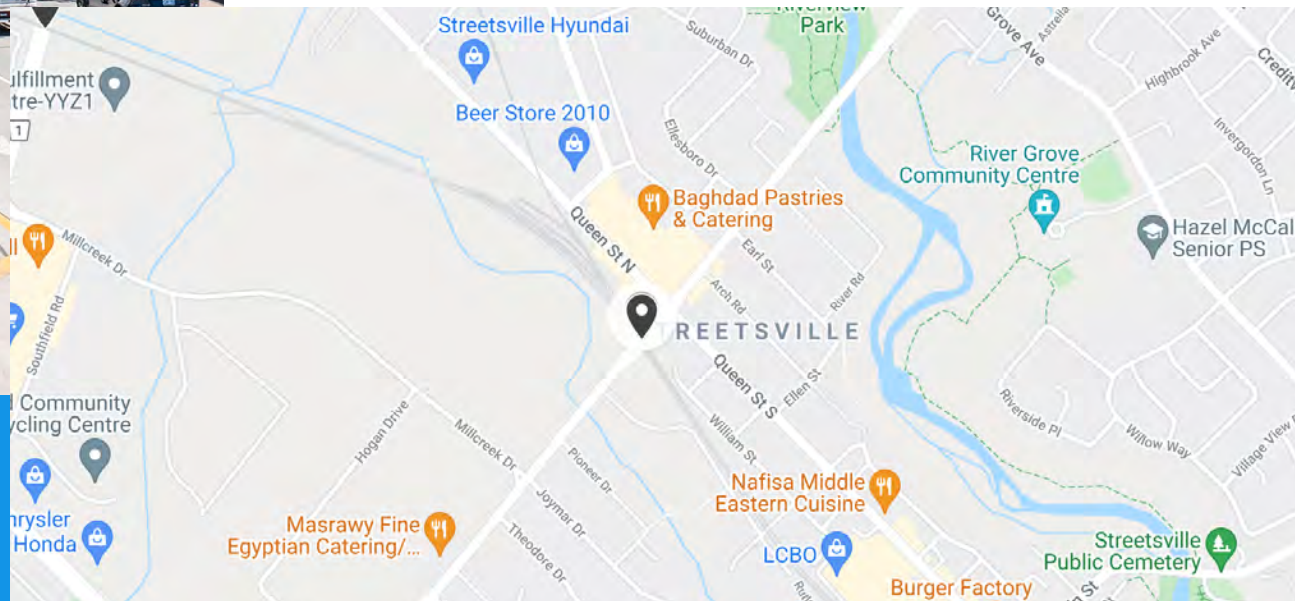
-79.723243

14,562

Daily Impressions

Located in 'Streetsville,' ADT113 & ADT114 are located in the cultural heart of Mississauga.

This unmissable board is at Britannia Rd W and Queen St, in close proximity to Home Hardware and auto body shops, and captures Eastbound traffic along Britannia heading from highway 407.



ALLVISION

TORONTO

ADT115

Eglinton Ave W
S/O Creditview Rd

8'H x 29'W • Facing EAST
644 x 196 (pixels)



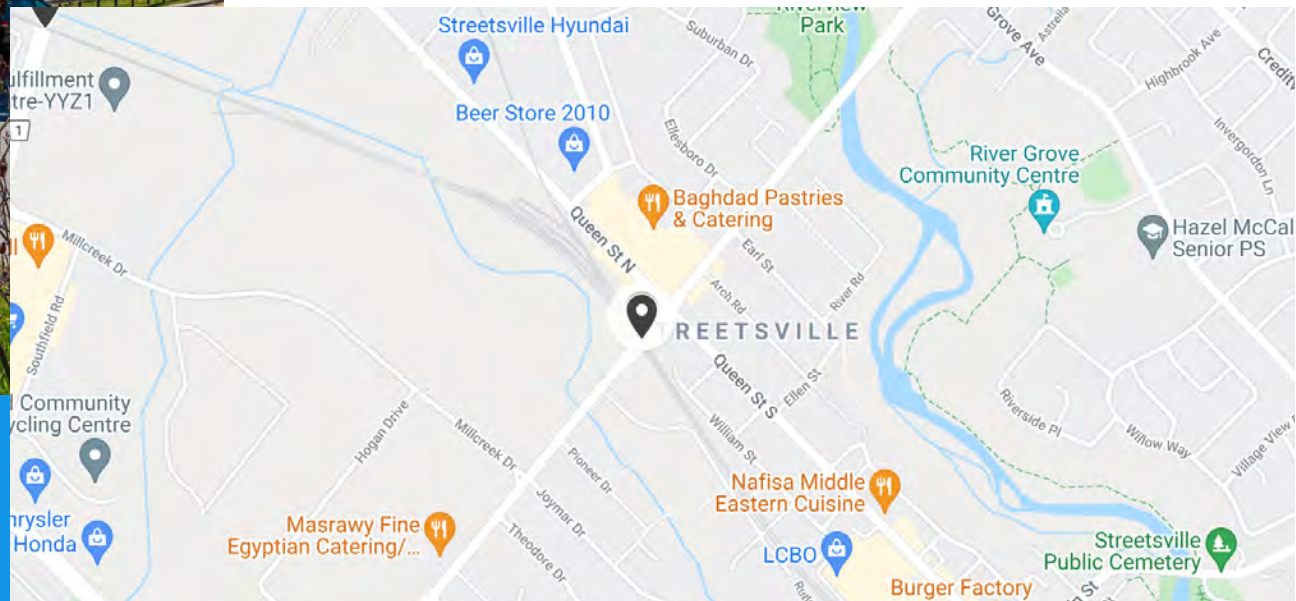
Latitude:
43.575202
Longitude:
-79.688038

34,619
Daily Impressions

Located on the rail line of the bustling Eglinton Ave W, ADT115 & ADT116 are situated in the affluent East Credit neighbourhood of Erin Mills, Mississauga.

The boards sit just down the road from a popular grocery store and other major shopping destinations.

ADT115 is an East-facing board capturing Westbound traffic heading toward Credit Valley Hospital and Erin Mills Town Centre.



ALLVISION

TORONTO

ADT116

Eglinton Ave W
S/O Creditview Rd

8'H x 29'W • Facing WEST
644 x 196 (pixels)

Latitude:
43.575202
Longitude:
-79.688038

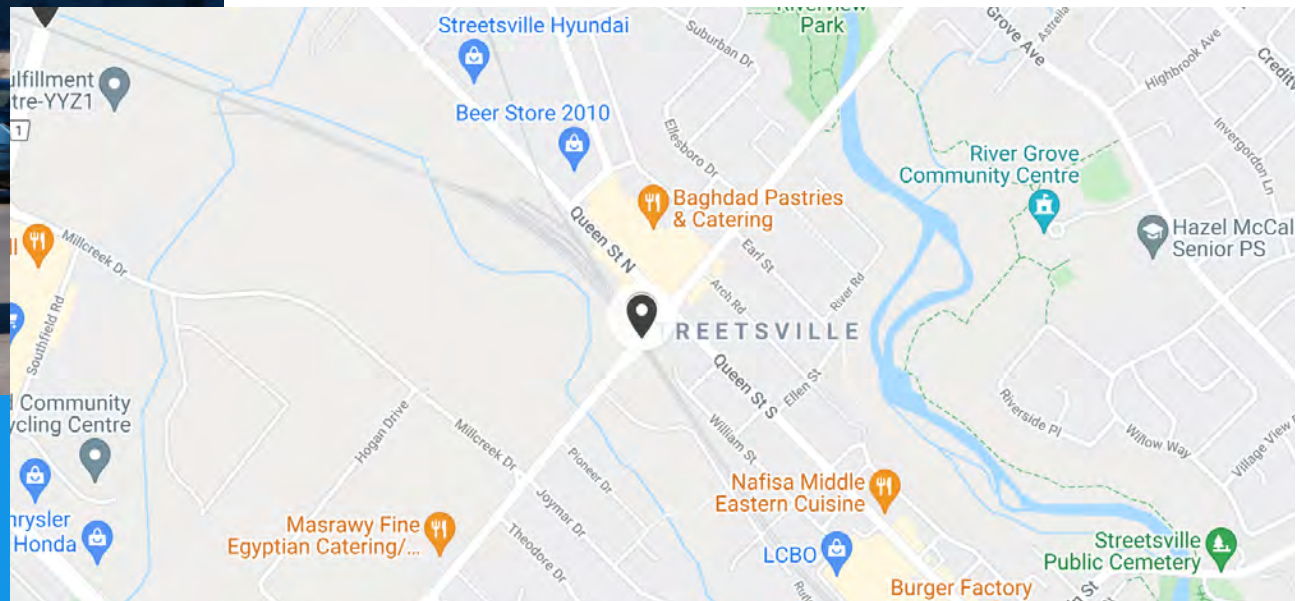
14,790

Daily Impressions

Located on the rail line of the bustling Eglinton Ave W. ADT115 & ADT116 are situated in the affluent East Credit neighbourhood of Erin Mills, Mississauga.

The boards sit just down the road from a popular grocery store and other major shopping destinations.

ADT116 is a West-facing board capturing Eastbound traffic heading from Credit Valley Hospital and Erin Mills Town Centre.



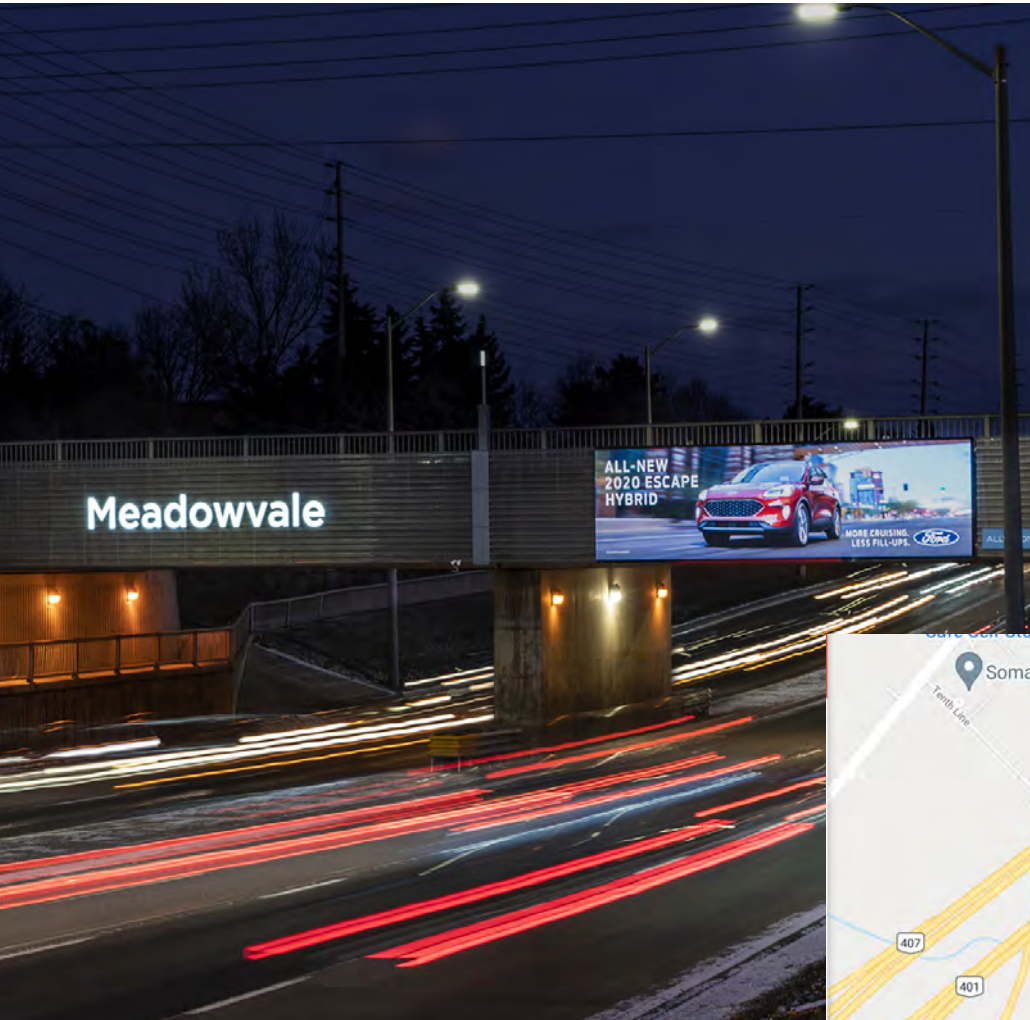
ALLVISION

TORONTO

ADT117

Winston Churchill
S/O Hwy 401

8'H x 29'W • Facing NORTH
644 x 196 (pixels)

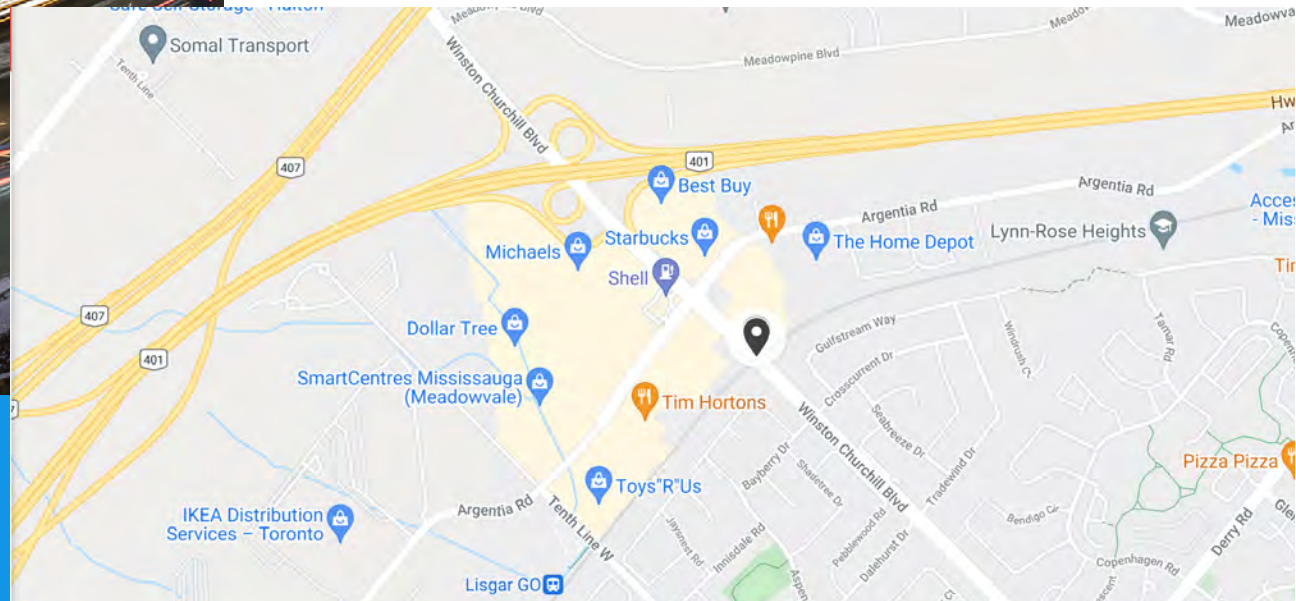


Latitude:
43.596055
Longitude:
-79.782087

Located at Winston Churchill Blvd and Hwy 401, ADT117 & ADT118 are right next to SmartCentres Mississauga (Meadowvale).

This North-facing board captures Southbound traffic heading away from the 401 towards Mississauga, Oakville & Toronto.

27,590
Daily Impressions



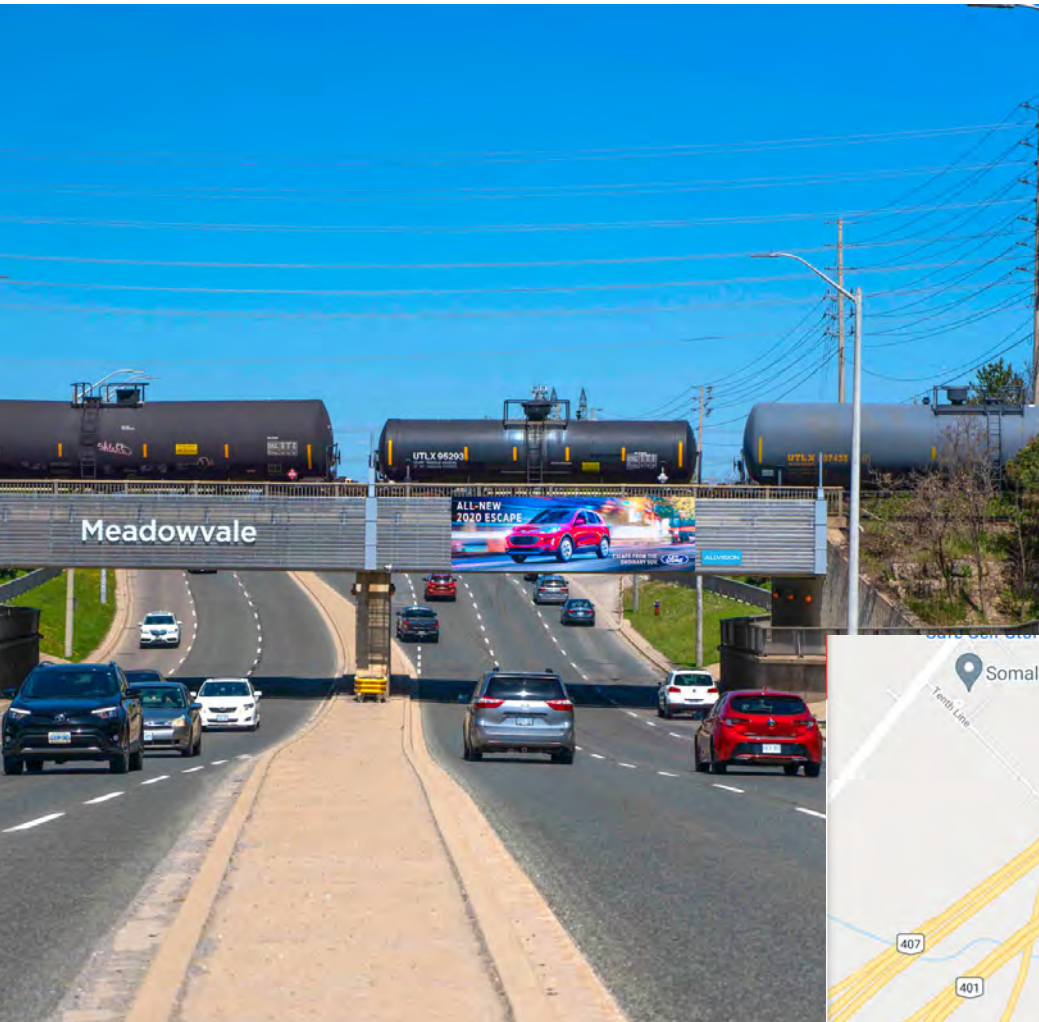
ALLVISION

TORONTO

ADT118

Winston Churchill
S/O Hwy 401

8'H x 29'W • Facing SOUTH
644 x 196 (pixels)



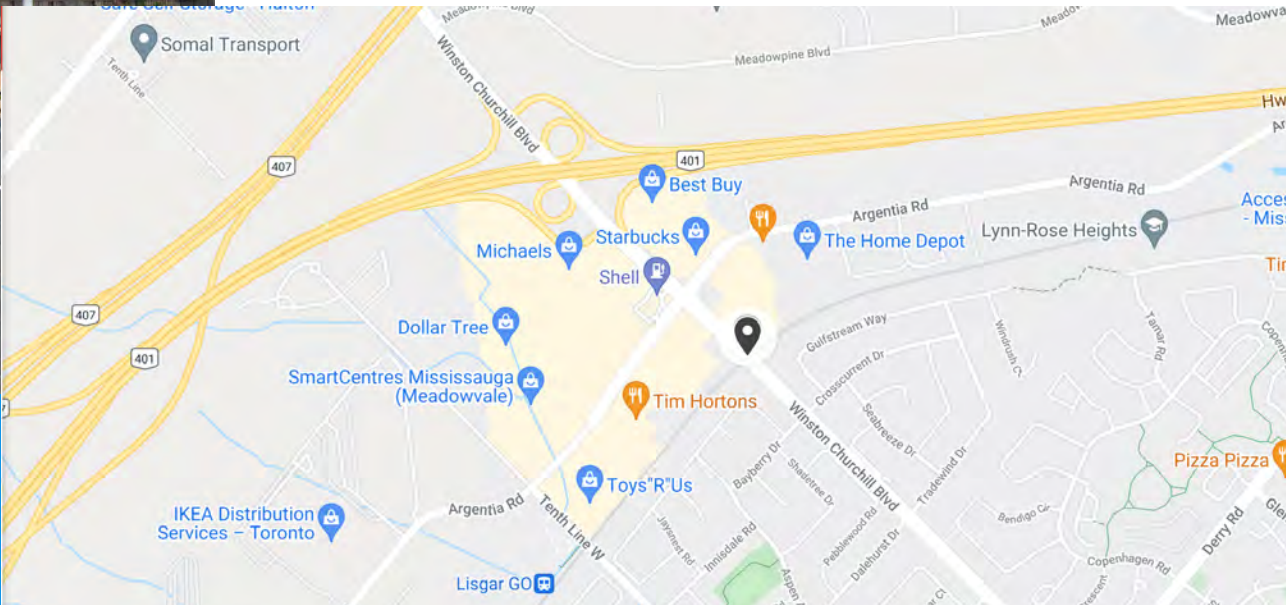
Latitude:
43.596055

Longitude:
-79.782087

Located at Winston Churchill Blvd and Hwy 401, ADT117 & ADT118 are right next to SmartCentres Mississauga (Meadowvale).

This South-facing board captures Northbound traffic heading towards the 401, as well as Georgetown, Brampton & Orangeville.

19,035
Daily Impressions



ALLVISION

TORONTO

ADT119

Cawthra Rd
S/O Dundas St

8'H x 29'W • Facing NORTH
644 x 196 (pixels)



Latitude:
43.593845

Longitude:
-79.598850

58,357
Daily Impressions

ADT119 & ADT120 are two beautiful boards located at Cawthra Rd and Dundas St, on either side of a busy underpass.

These boards are our busiest in the Mississauga region. They are close to the QEW, near the Dixie Outlet Centre and Sherway Gardens.

This board captures southbound traffic heading toward the Queensway and QEW along Cawthra.



ALLVISION

TORONTO

ADT120

Cawthra Rd
S/O Dundas St

8'H x 29'W • Facing SOUTH
644 x 196 (pixels)



Latitude:
43.593845

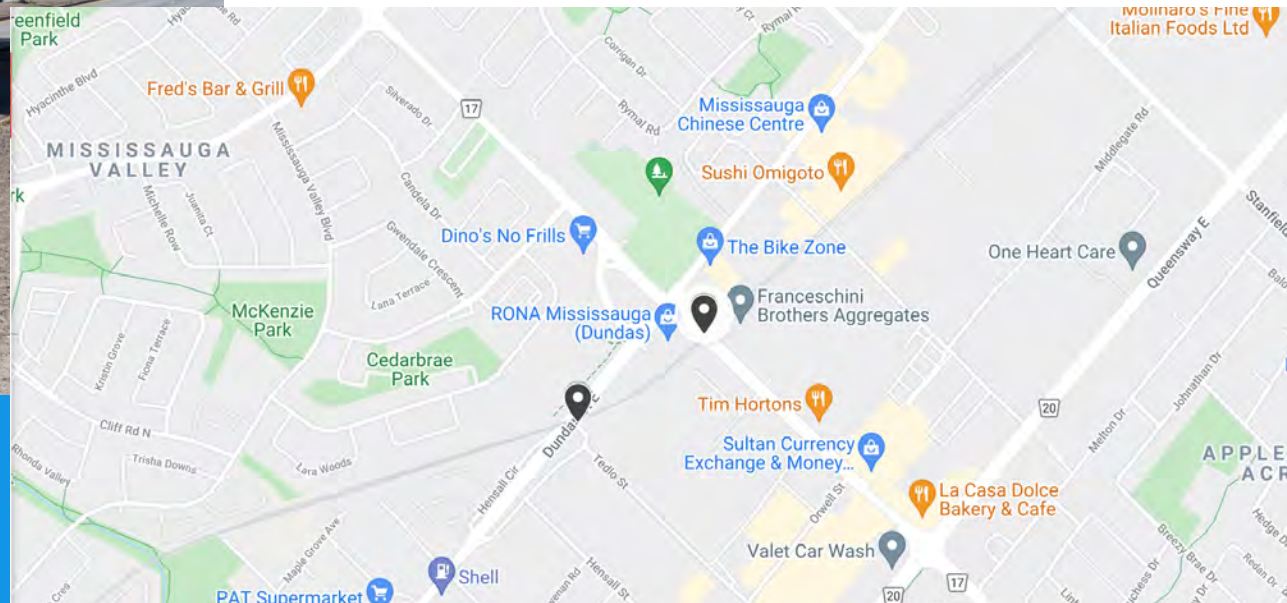
Longitude:
-79.598850

25,629
Daily Impressions

ADT119 & ADT120 are two beautiful boards located at Cawthra Rd and Dundas St, on either side of a busy underpass.

These boards are our busiest in the Mississauga region. They are close to the QEW, near the Dixie Outlet Centre and Sherway Gardens.

This board captures northbound traffic heading toward the Queensway and QEW along Cawthra.



ALLVISION

TORONTO

ADT121

Hurontario St
600M N/O Dundas St W

8'H x 29'W • Facing NORTH
644 x 196 (pixels)



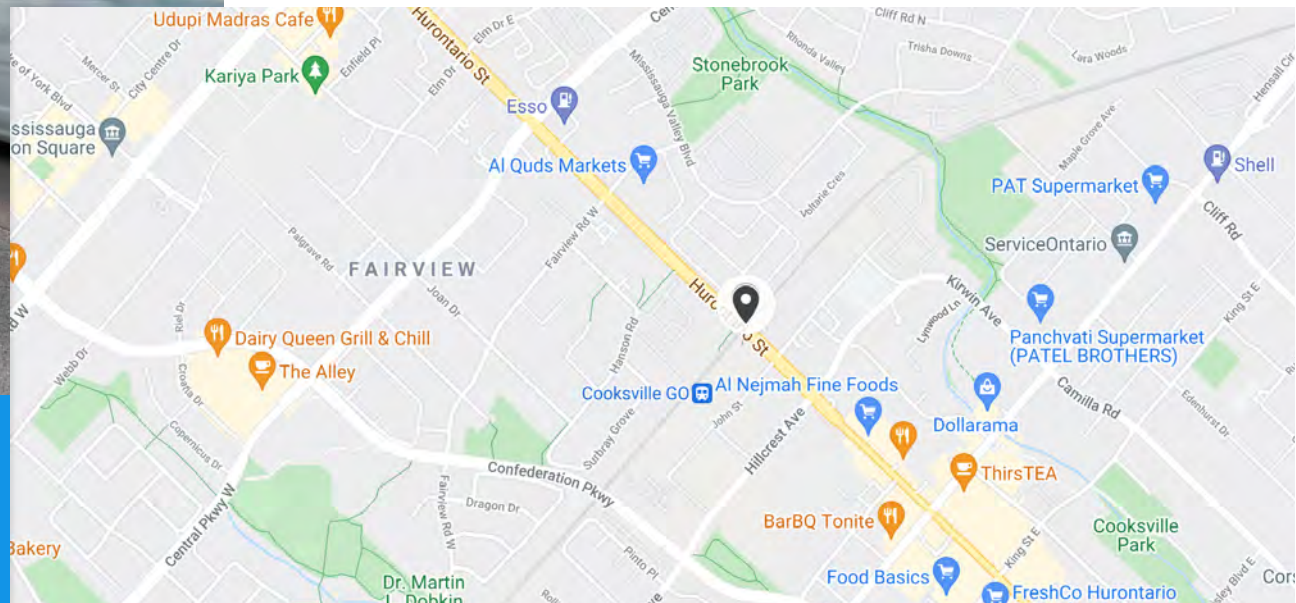
Latitude:
43.584503
Longitude:
-79.622351

ADT121 & ADT122 are two eye-catching boards located on what may be the busiest rush hour artery to and from the QEW and the 403, Hurontario St.

The boards are close to a very large T&T supermarket, as well Mississauga Square, and of course the Toronto International Airport!

33,204

Daily Impressions



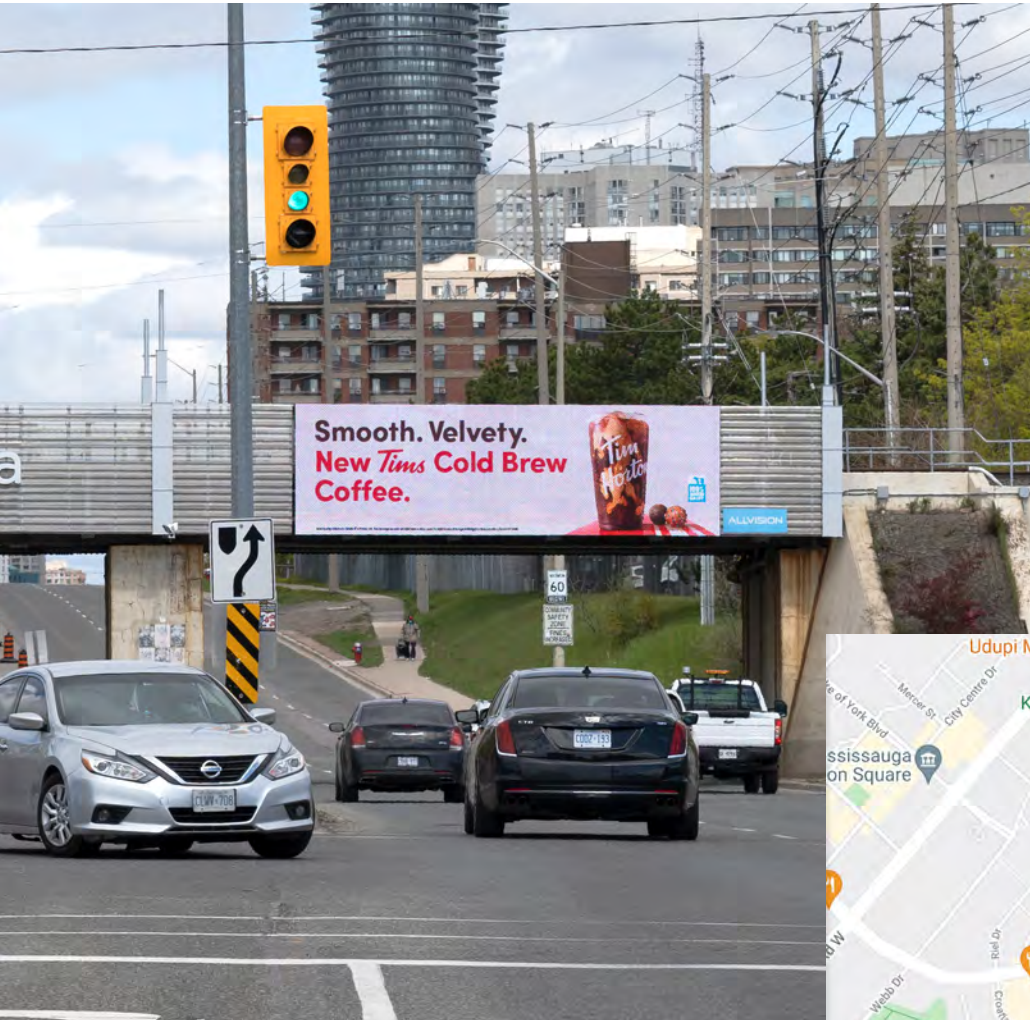
ALLVISION

TORONTO

ADT122

Hurontario St
600M N/O Dundas St W

8'H x 29'W • Facing SOUTH
644 x 196 (pixels)



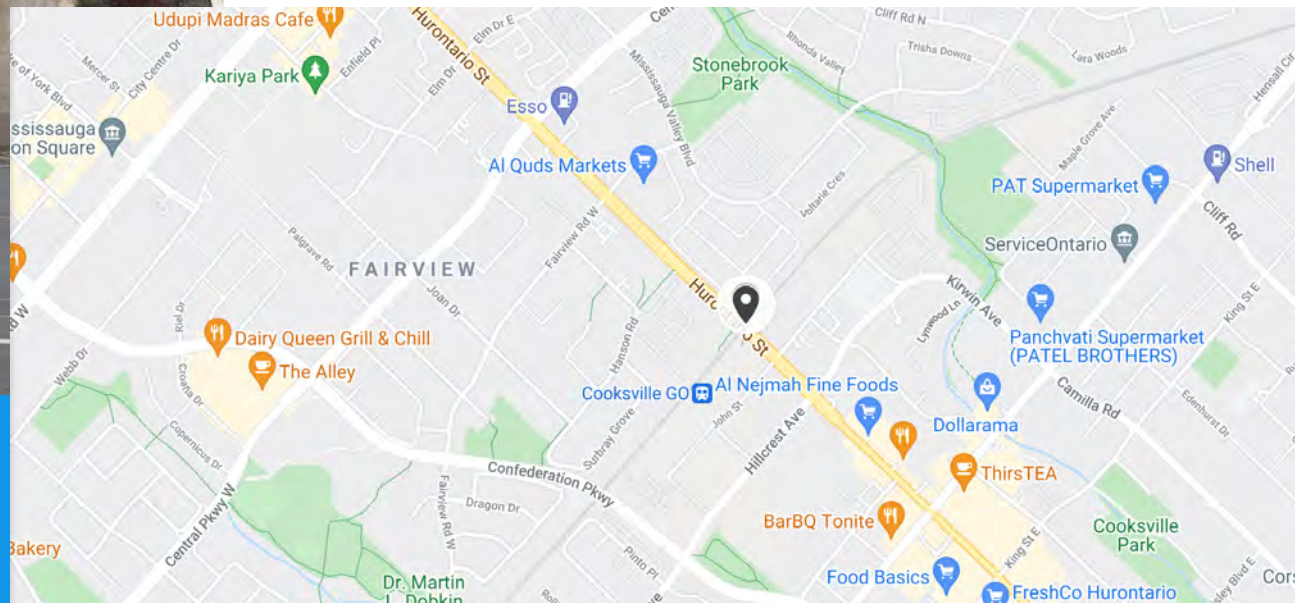
Latitude:
43.584503

Longitude:
-79.622351

33,204
Daily Impressions

ADT121 & ADT122 are two eye-catching boards located on what may be the busiest rush hour artery to and from the QEW and the 403, Hurontario St.

The boards are close to a very large T&T supermarket, as well Mississauga Square, and of course the Toronto International Airport!



ALLVISION

TORONTO

ADT123

Burnhamthorpe Rd
S/O Central Pkwy W

8'H x 29'W • Facing EAST
644 x 196 (pixels)



Latitude:
43.566571

Longitude:
-79.666508

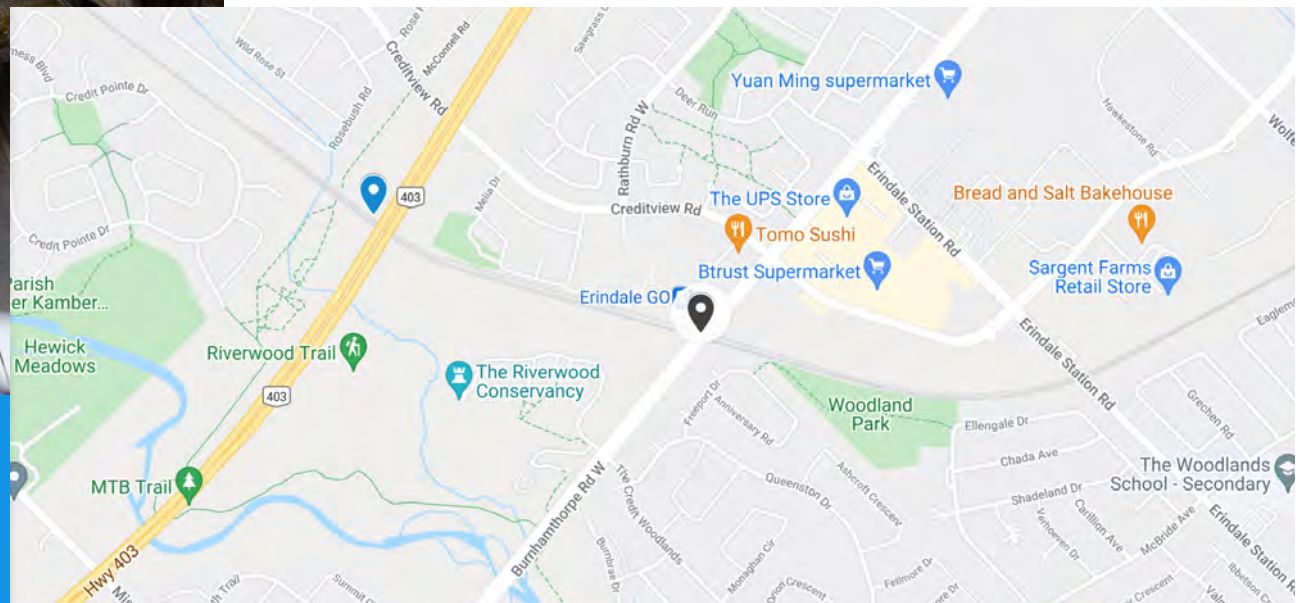
37,809

Daily Impressions

ADT123 & ADT124 are a pair of excellent digital faces that are located right on Burnhamthorpe Rd, just West of Central Parkway W.

The faces are next to the Erindale GO station and just down the road from Golden Square Centre.

This East-facing board captures traffic travelling Westbound toward highway 403.



ALLVISION

TORONTO

ADT124

Burnhamthorpe Rd
S/O Central Pkwy W

8'H x 29'W • Facing WEST
644 x 196 (pixels)



Latitude:
43.566571

Longitude:
-79.666508

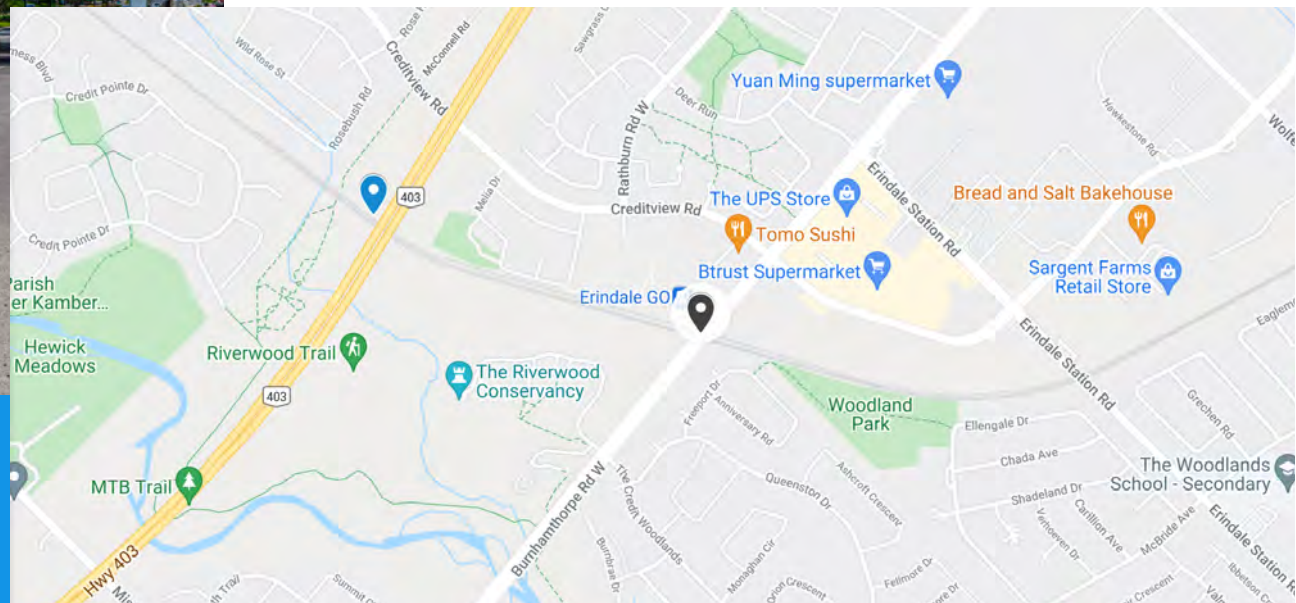
24,215

Daily Impressions

ADT123 & ADT124 are a pair of excellent digital faces that are located right on Burnhamthorpe Rd, just West of Central Parkway W.

The faces are next to the Erindale GO station and just down the road from Golden Square Centre.

This West-facing board captures traffic travelling Westbound toward highway 403.



ALLVISION

TORONTO

ADT125

Dixie Rd
S/O Dundas St E

8'H x 29'W • Facing NORTH
644 x 196 (pixels)



Latitude:
43.606342
Longitude:
-79.579670

21,492
Daily Impressions

Located on the border of Mississauga & Etobicoke, right at Dixie Rd and Dundas St E, this board is on a major roadway to and from Toronto.

Just down the street from the busy Dundas and Dixie shopping area with a wide variety of stores, this north-facing board captures all traffic travelling to and from the QEW.



ALLVISION

TORONTO

ADT126

Dixie Rd
S/O Dundas St E

8'H x 29'W • Facing SOUTH
644 x 196 (pixels)



Latitude:
43.606342
Longitude:
-79.579670

20,590
Daily Impressions

Located on the border of Mississauga & Etobicoke, right at Dixie Rd and Dundas St E, this board is on a major roadway to and from Toronto.

Just down the street from the busy Dundas and Dixie shopping area with a wide variety of stores, this south-facing board captures all traffic travelling to and from the QEW.



ALLVISION

TORONTO

ADT127

Mavis Rd
625M S/O Central Pkwy

8'H x 29'W • Facing SOUTH
644 x 196 (pixels)



Latitude:

43.571054

Longitude:

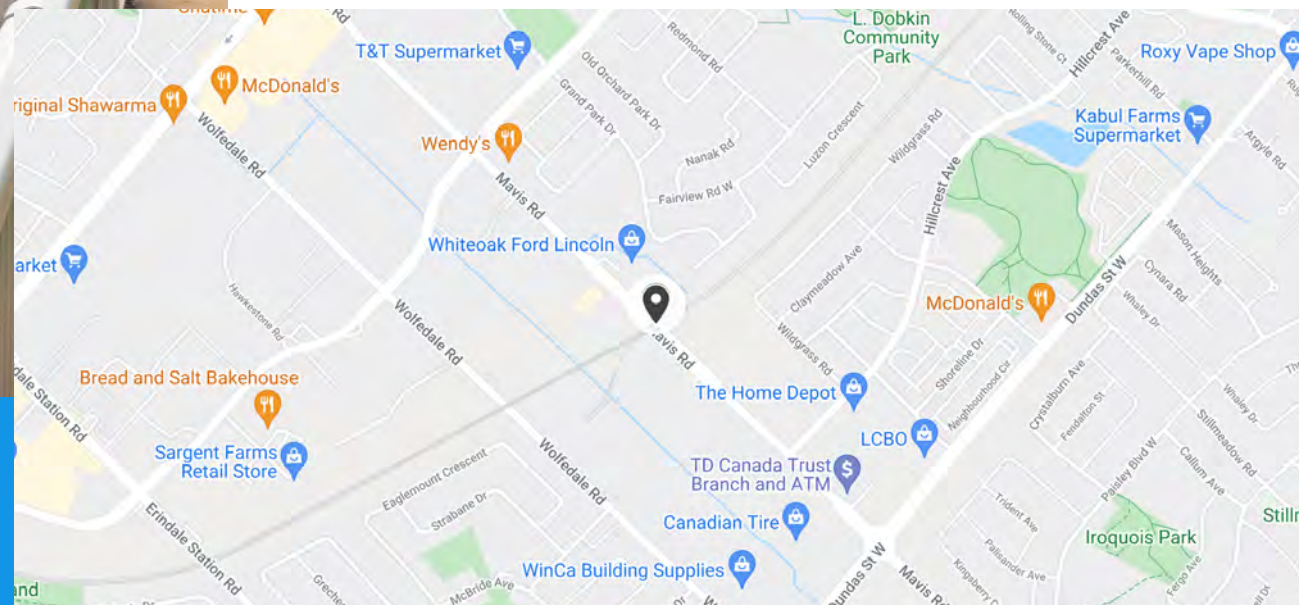
-79.640075

ADT127 & ADT128 can be found on Mavis Rd and Central Parkway, down the road from stores such as Home Depot, Real Canadian Superstore and several auto dealerships and autobody shops.

This South-facing board captures Southbound traffic coming off the 403.

24,759

Daily Impressions



ALLVISION

TORONTO

ADT128

Mavis Rd
625M S/O Central Pkwy

8'H x 29'W • Facing NORTH
644 x 196 (pixels)



Latitude:
43.571054

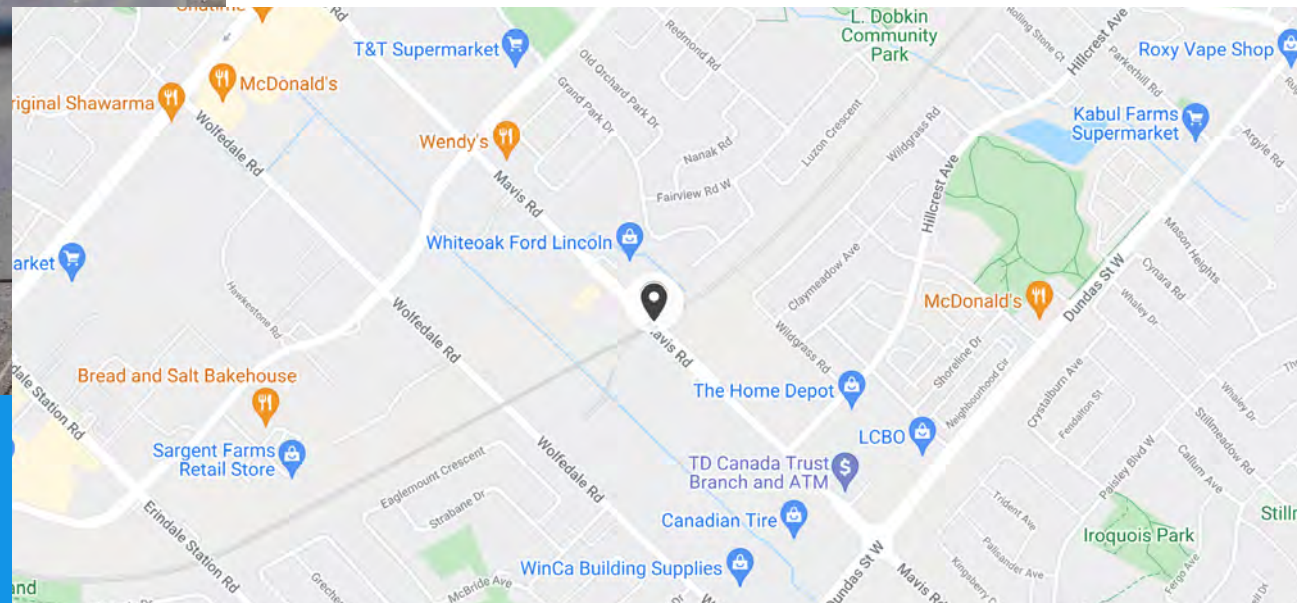
Longitude:
-79.640075

ADT127 & ADT128 can be found on Mavis Rd and Central Parkway, down the road from stores such as Home Depot, Real Canadian Superstore and several auto dealerships and autobody shops.

This North-facing board captures Northbound traffic heading out of the city.

24,759

Daily Impressions



ALLVISION

TORONTO

ADT129

Derry Road
W/O Argentia Rd

8'H x 29'W • Facing EAST
644 x 196 (pixels)



Latitude:
43.599240
Longitude:
-79.759126

32,693

Daily Impressions

Streetsville, Riverview, Vista Heights and Meadowvale are just some of the affluent Mississauga neighbourhoods that converge onto Derry Road while travelling to and from Hwy 401 or the 407 ETR.

ADT129 & ADT130 are also right beside the bustling Meadowvale Town Centre, and other large shopping centres.

They're bold, unmissable boards ready to connect you with your audience,



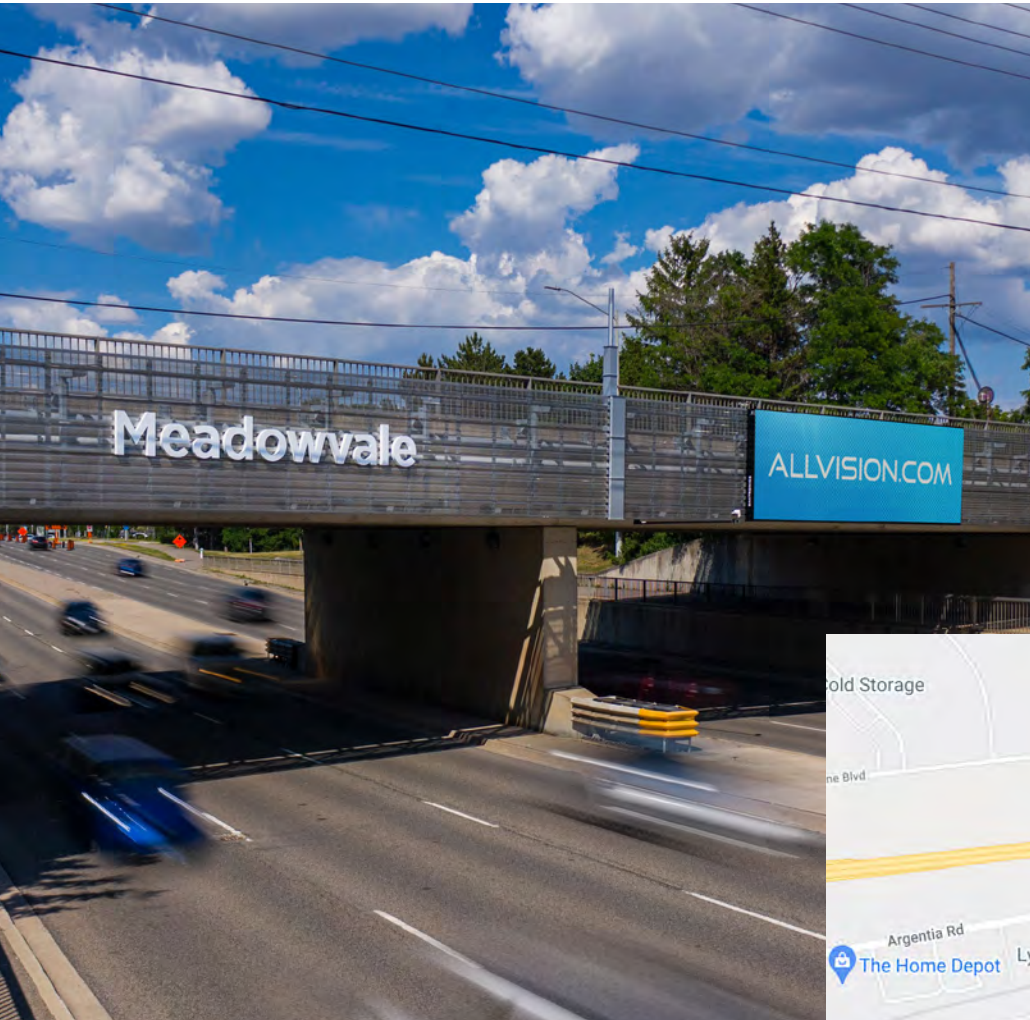
ALLVISION

TORONTO

ADT130

Derry Road
W/O Argentia Rd

8'H x 29'W • Facing WEST
644 x 196 (pixels)



Latitude:
43.599240

Longitude:
-79.759126

33,327

Daily Impressions

Streetsville, Riverview, Vista Heights and Meadowvale are just some of the affluent Mississauga neighbourhoods that converge onto Derry Road while travelling to and from Hwy 401 or the 407 ETR.

ADT129 & ADT130 are also right beside the bustling Meadowvale Town Centre, and other large shopping centres.

They're bold, unmissable boards ready to connect you with your audience,



ALLVISION

TORONTO

ADT131

Dundas St
W/O Cawthra Rd

8'H x 29'W • Facing EAST
644 x 196 (pixels)

Latitude:

43.591805

Longitude:

-79.602901

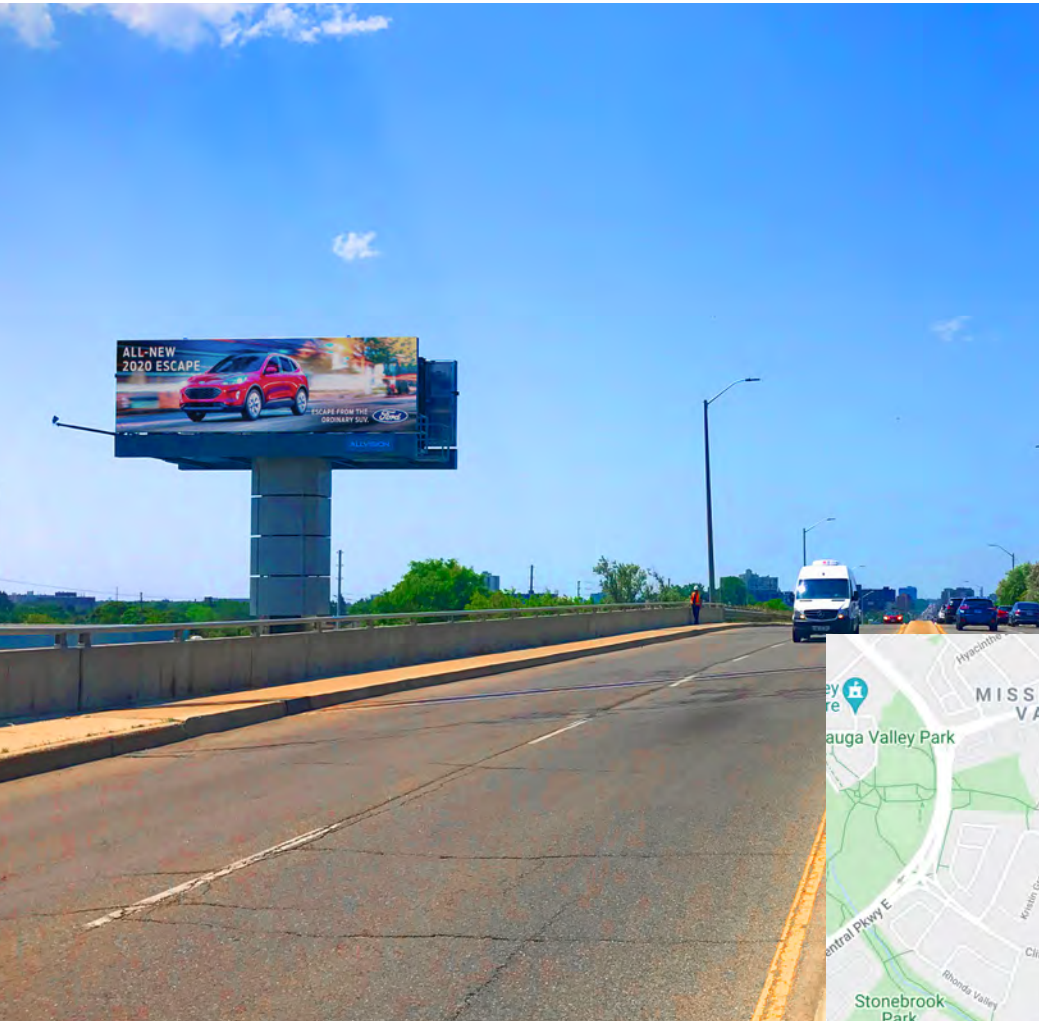
28,851

Daily Impressions

Dundas Street is one of the longest streets in Toronto, running 23 km from Etobicoke to Scarborough and connecting the entire GTA.

ADT131 & ADT132 are strategically positioned on one of this roads most driven sections, capturing a valuable audience daily.

Standing tall alongside a 4-lane overpass, these Dundas boards greet traffic heading to Hurontario St & the QEW, and are close to Dixie Outlet Mall, Trillium Health Partners, as well as many restaurants, golf courses and important residential neighbourhoods.



ALLVISION

TORONTO

ADT132

Dundas St
W/O Cawthra Rd

8'H x 29'W • Facing WEST
644 x 196 (pixels)

Latitude:
43.591805

Longitude:
-79.602901

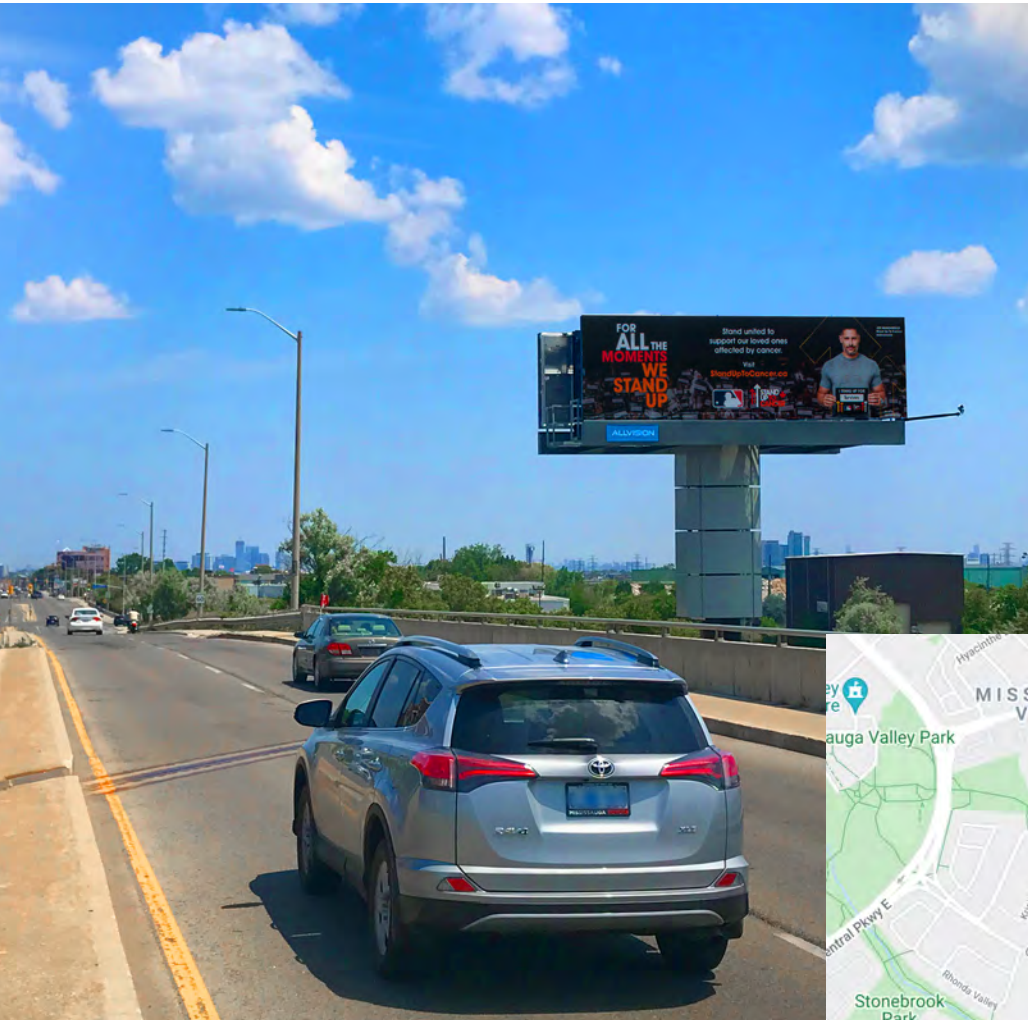
20,892

Daily Impressions

Dundas Street is one of the longest streets in Toronto, running 23 km from Etobicoke to Scarborough and connecting the entire GTA.

ADT131 & ADT132 are strategically positioned on one of this roads most driven sections, capturing a valuable audience daily.

Standing tall alongside a 4-lane overpass, these Dundas boards greet traffic heading to Hurontario St & the QEW, and are close to Dixie Outlet Mall, Trillium Health Partners, as well as many restaurants, golf courses and important residential neighbourhoods.



ALLVISION

TORONTO

ADT137

Erin Mills Parkway
S/O Mississauga Road

8'H x 29'W • Facing NORTH
644 x 196 (pixels)

Latitude:
43.5937

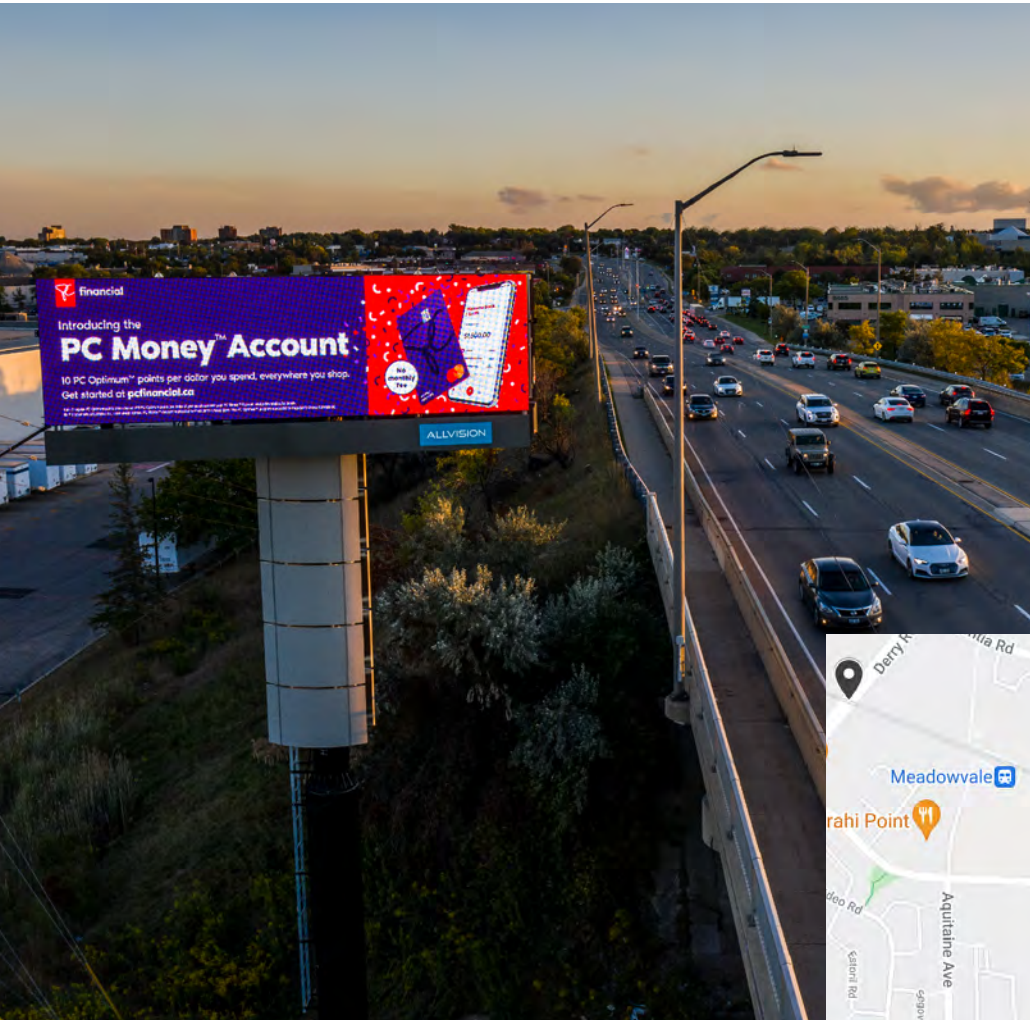
Longitude:
-79.7397

44,407
Daily Impressions

ADT137 & ADT138 are located just south of highway 401 in Mississauga, the second largest city in the Greater Toronto Area.

Poised above a 6-lane major commuter parkway with excellent sight lines, this large format digital board connects HWY 407/401 to downtown Mississauga and Toronto.

With approximately 40,000 daily impressions per face, Allvision continues to lead the Mississauga market with large format digital out-of-home.



ALLVISION

TORONTO

ADT138

Erin Mills Parkway
S/O Mississauga Road

8'H x 29'W • Facing SOUTH
644 x 196 (pixels)

Latitude:
43.5937

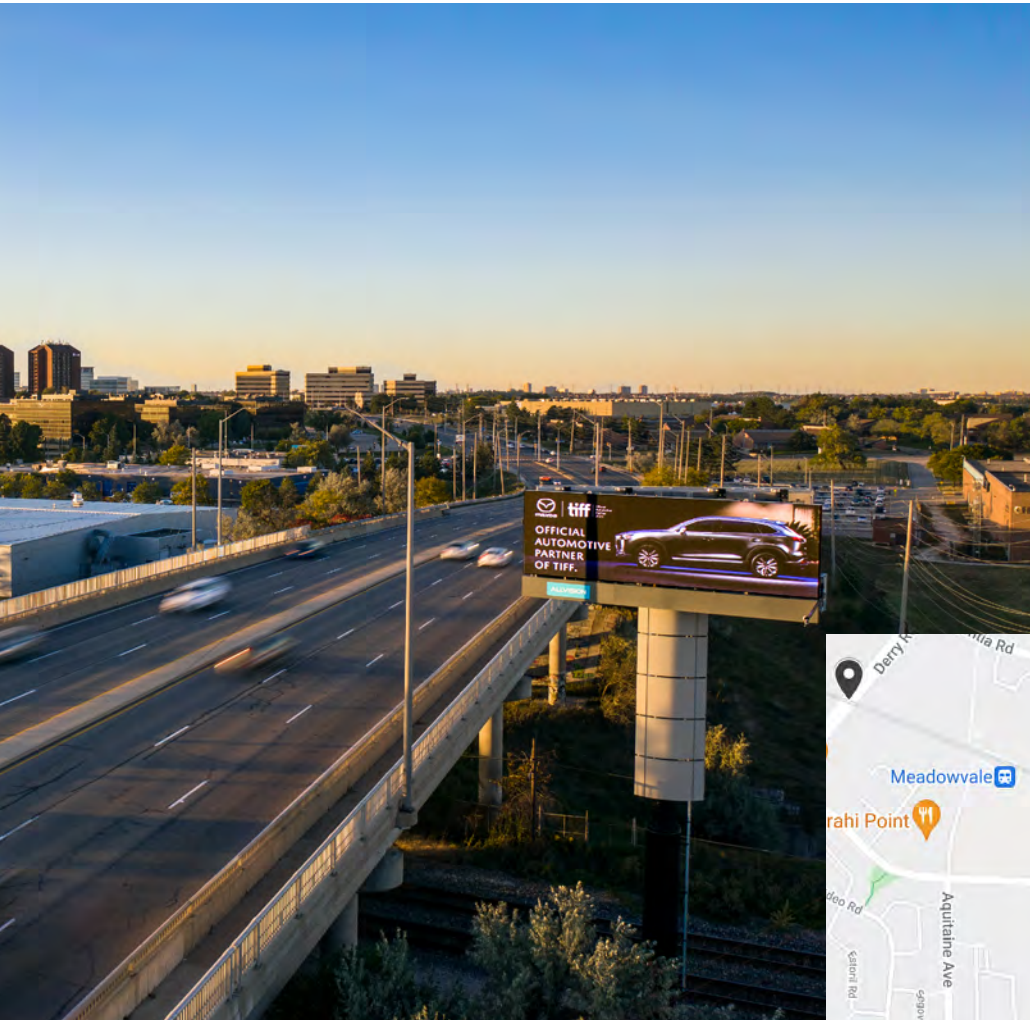
Longitude:
-79.7397

37,008
Daily Impressions

ADT137 & ADT138 are located just south of highway 401 in Mississauga, the second largest city in the Greater Toronto Area.

Poised above a 6-lane major commuter parkway with excellent sight lines, this large format digital board connects HWY 407/401 to downtown Mississauga and Toronto.

With approximately 40,000 daily impressions per face, Allvision continues to lead the Mississauga market with large format digital out-of-home.



ALLVISION



MONTREAL

ADM201

Aut 15 (Champlain Br)
258m AED Wellington CN

14'H x 48'W • Facing NORTH
1056 x 288 (pixels)

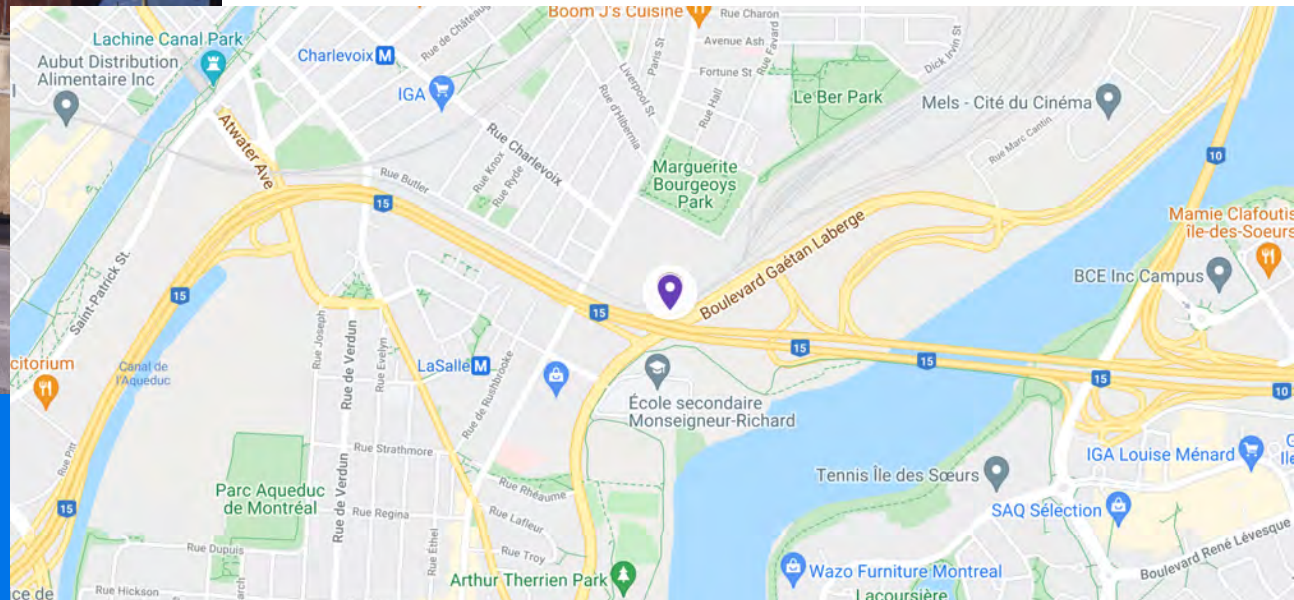
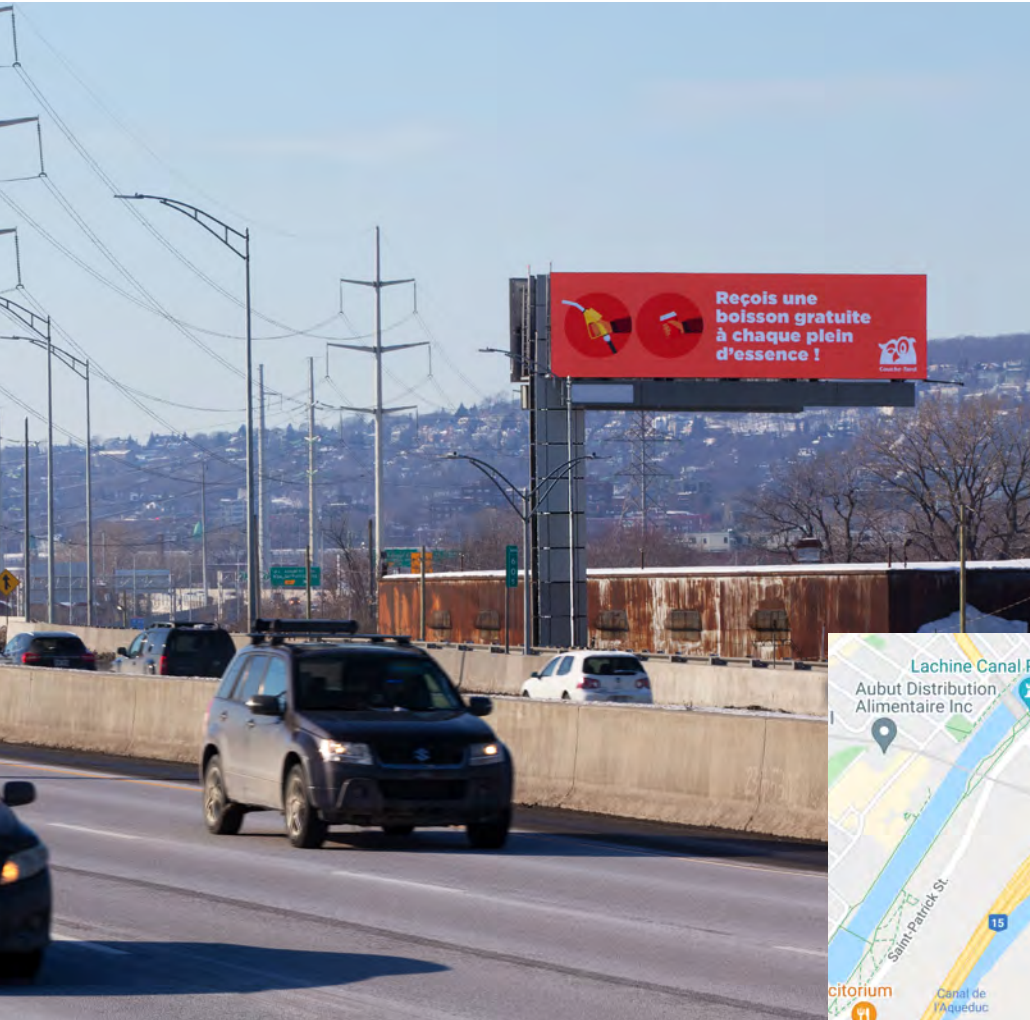
Latitude:
45.472042
Longitude:
-73.559842

87,971

Daily Impressions

ADM201 is located on the high traffic Highway 15, just west of the Champlain Bridge, on which commuters traveling from the bridge must pass as they travel towards downtown Montreal.

This billboard is the closest billboard to the downtown Montreal core and the only board of its kind in the area.



ALLVISION

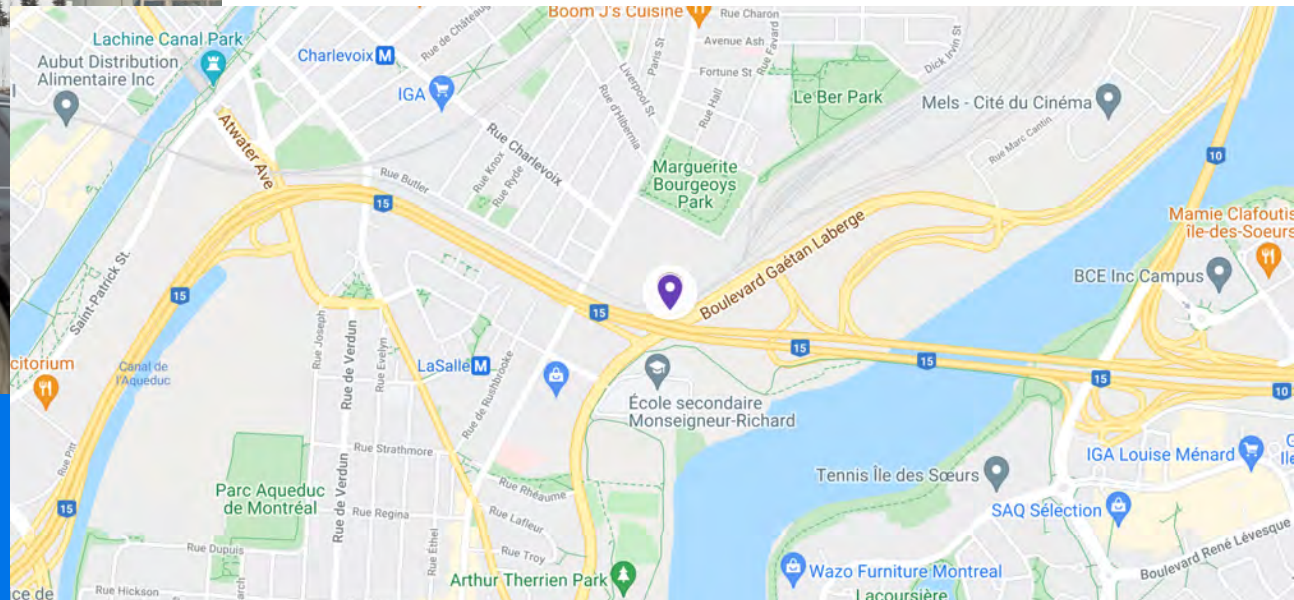
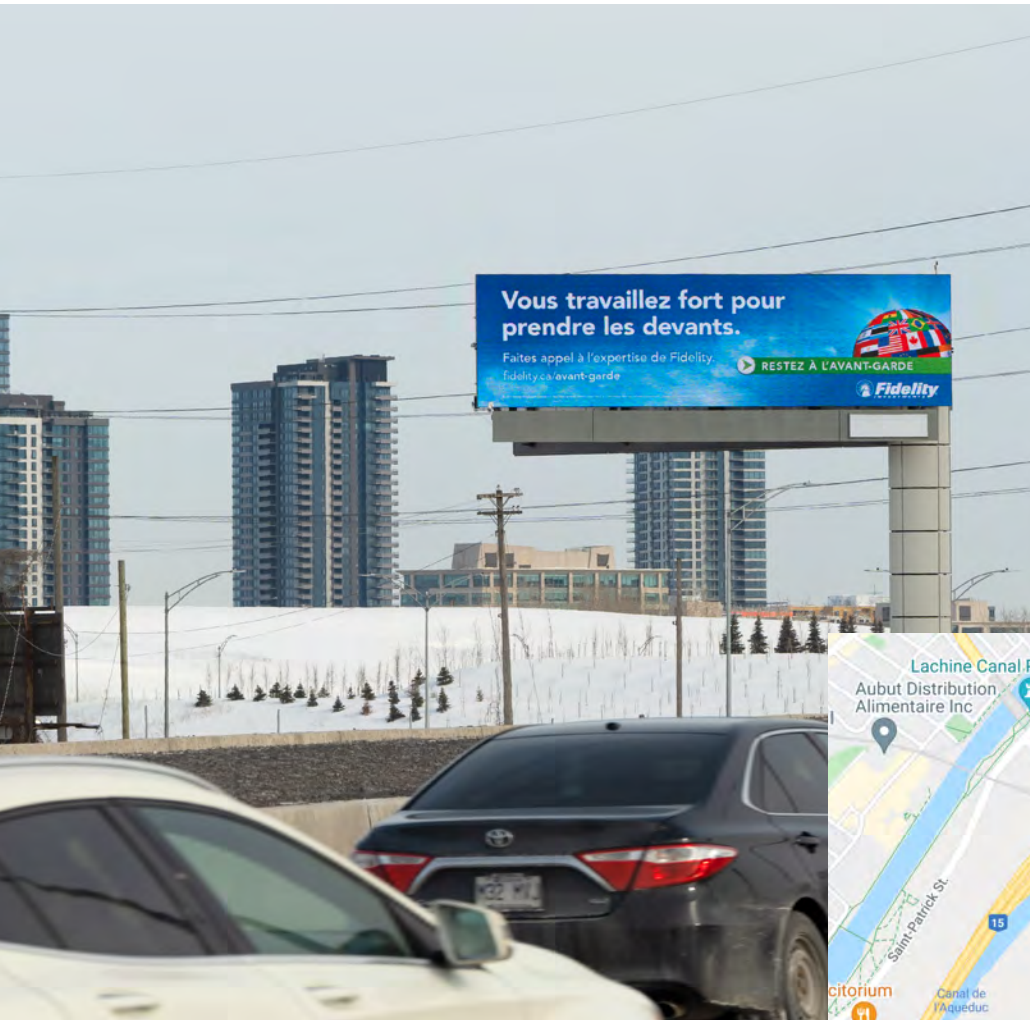
ADM202

14'H x 48'W • Facing SOUTH
1056 x 288 (pixels)

87,971
Daily Impressions

Commuters passing this spectacular billboard can connect from Avenue Atwater or Hwy 720 exiting downtown Montreal and heading to suburbs including Brossard and La Prairie,

This billboard is the closest billboard to the downtown Montreal core and the only board of its kind in the area.



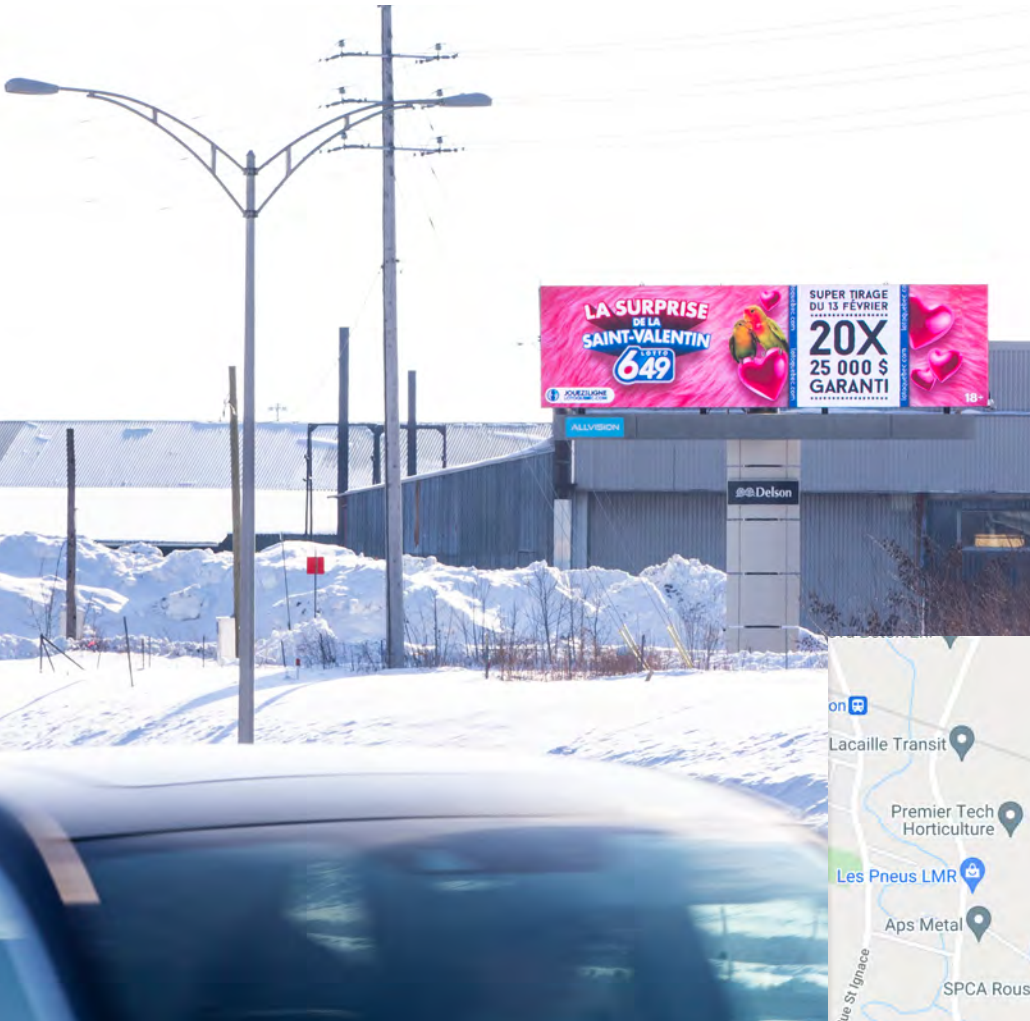
ALLVISION

MONTRÉAL

ADM203

Aut 15 756m and Aut 30
CO, Delson

10'H x 35'W • Facing NORTH
660 x 180 (pixels)

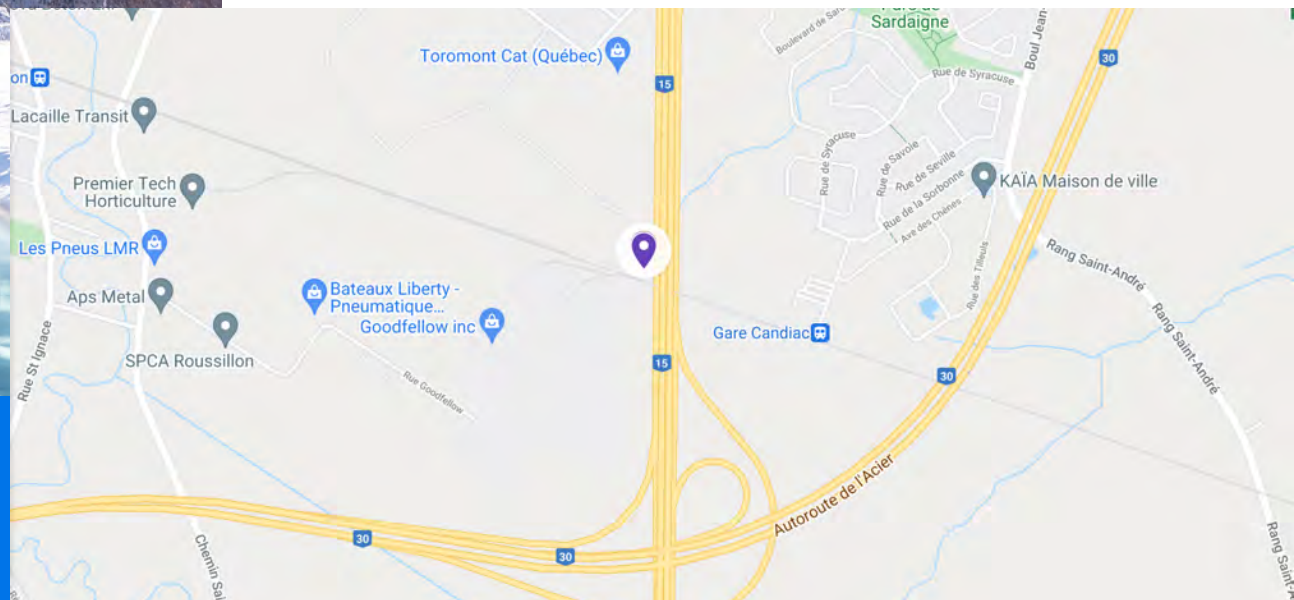


Latitude:
45.362102
Longitude:
-73.520608

40,040
Daily Impressions

ADM203 is a premium digital billboard within the Montreal CMA, strategically located on Highway 15, one of the main arteries that connect commuters to Highway 30.

This digital screen is an excellent way to advertise your business, build brand awareness and reach consumers that reside in Delson, Saint-Constant, Candiac, Saint-Philippe and Saint-Mathieu.



ALLVISION

ALLVISION

LOCATION SHEETS



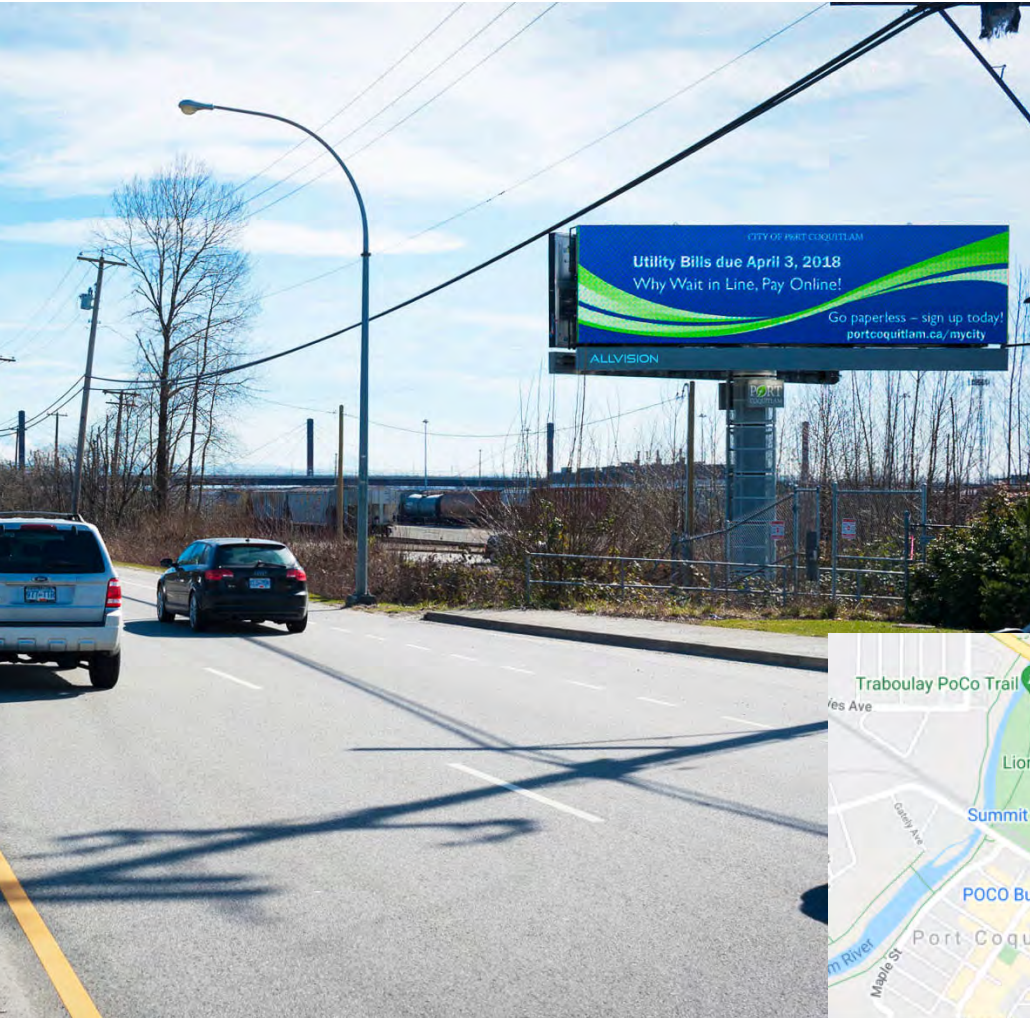
VANCOUVER CMA

VANCOUVER

ADV301

Lougheed Hwy 170M
E/O Oxford St SS

10'H x 35'W • Facing EAST
660 x 180 (pixels)



Latitude:

49.262990

Longitude:

-122.766121

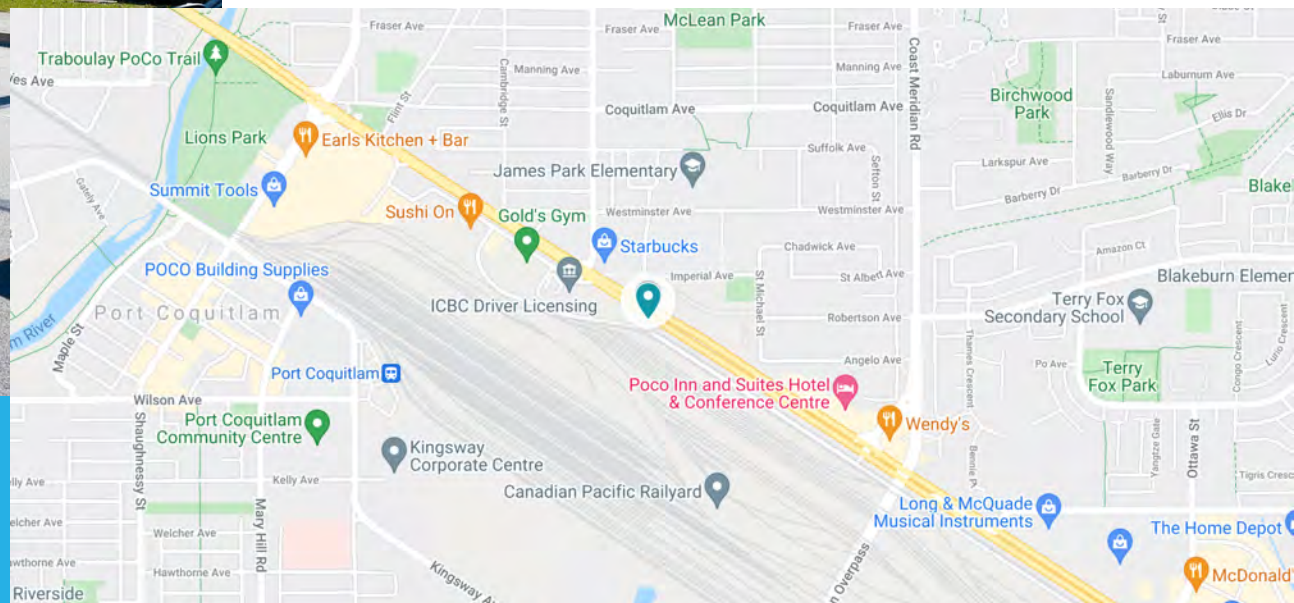
44,343

Daily Impressions

This 10' x 35' digital bulletin is located on a prime high traffic commuter road in Port Coquitlam.

This panel is viewed by traffic commuting into Vancouver or Port Moody from neighbouring Maple Ridge, or by those heading back to the city after a day of hiking or mountain biking in the area.

It is located on the Lougheed Highway, which acts as the main connector road between Vancouver and the Tri-Cities of Coquitlam, Port Coquitlam, and Port Moody.



ALLVISION

VANCOUVER

ADV302

Lougheed Hwy 170M
E/O Oxford St SS

10'H x 35'W • Facing WEST
660 x 180 (pixels)

Latitude:
49.262990

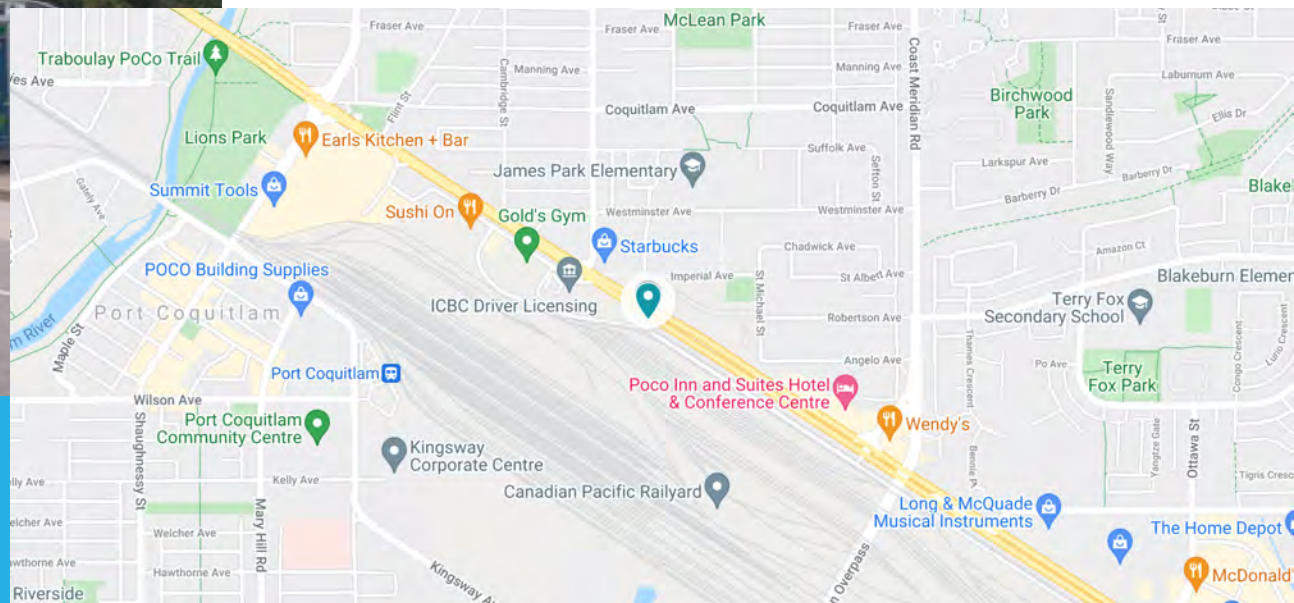
Longitude:
-122.766121

44,343
Daily Impressions

This 10' x 35' digital bulletin on the Lougheed Highway is sure to impress!

It is located on a heavy traffic commuter road which connects Vancouver to the tri-cities of Port Coquitlam, Coquitlam, and Port Moody.

It is seen by commuters heading back home to the tri-cities from Vancouver, and adventurous Vancouverites heading out to take advantage of the mountain fun to be had in the tri-cities area.



ALLVISION

VANCOUVER

ADV303

Mary Hill Bypass 350M
S/O Lougheed Hwy WS

10'H x 35'W • Facing NORTH
660 x 180 (pixels)



Latitude:

49.248246

Longitude:

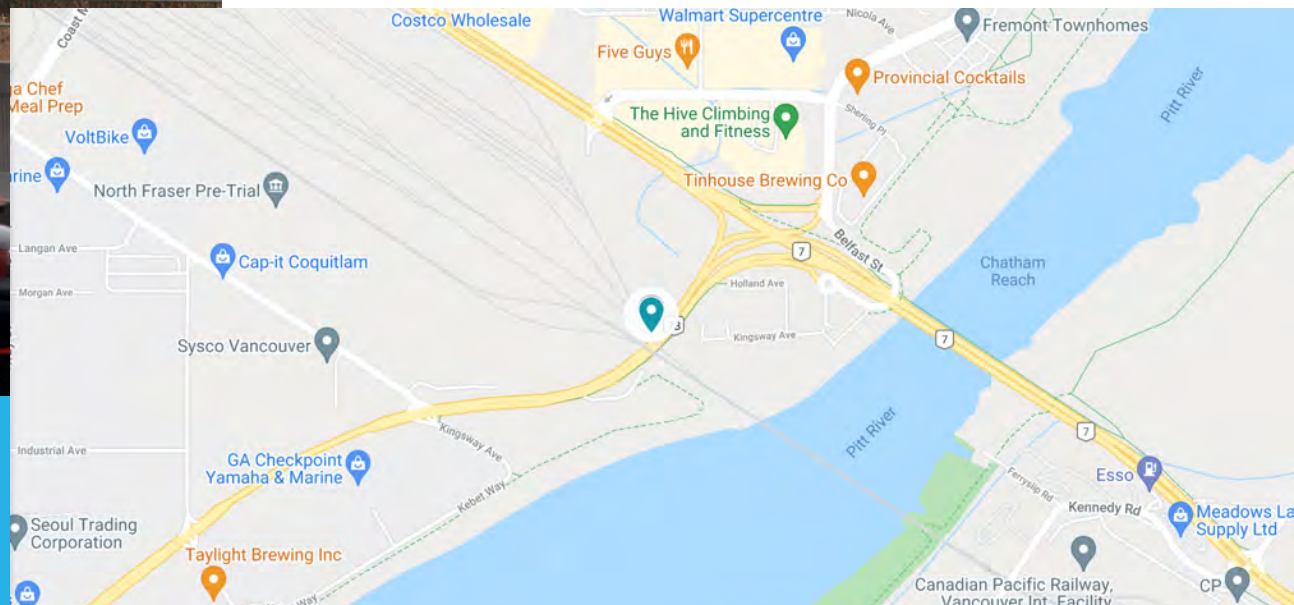
-122.740028

29,520

Daily Impressions

ADV303 & ADV304 are a pair of 10' x 35' digital bulletins with clear sightlines, visible to traffic heading south from Coquitlam and Port Coquitlam en route to New Westminster or other southern communities.

The area also boasts a number of large retailers, such as Costco and Real Canadian Superstore, as well as many golf courses.



ALLVISION

VANCOUVER

ADV304

Mary Hill Bypass 409M
S/O Lougheed Hwy ES

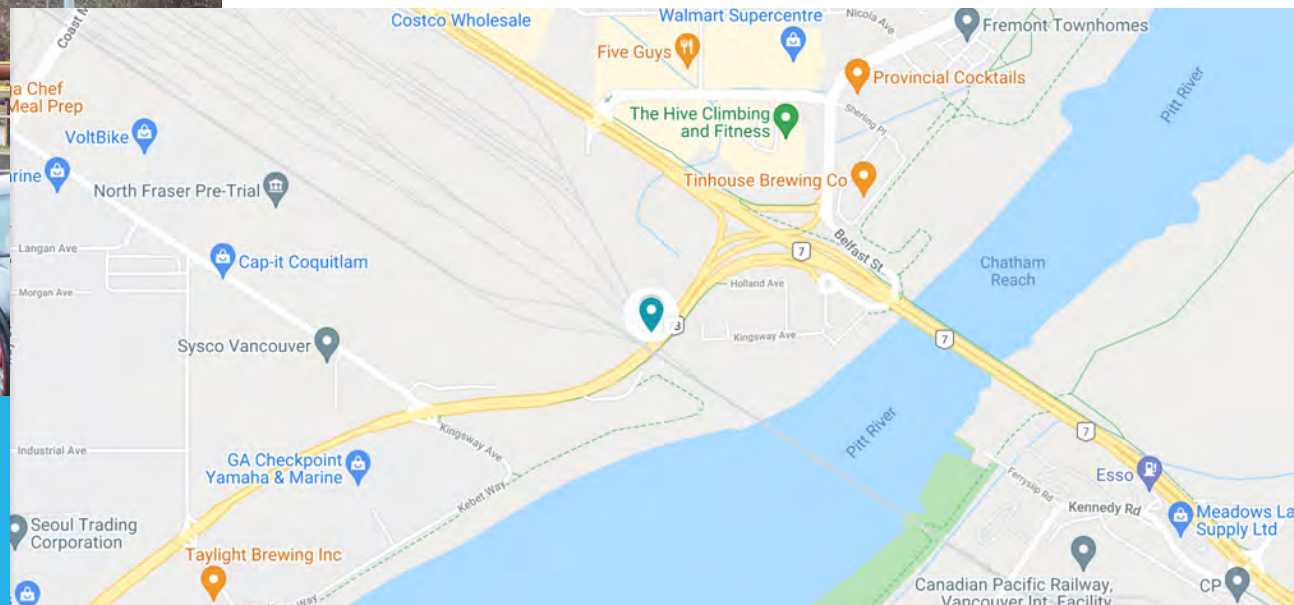
10'H x 35'W • Facing SOUTH
660 x 180 (pixels)

Latitude:
49.247596
Longitude:
-122.740176

29,520
Daily Impressions

ADV303 & ADV304 are a pair of 10' x 35' digital bulletins with clear sightlines, visible to traffic heading south from Coquitlam and Port Coquitlam en route to New Westminster or other southern communities.

The area also boasts a number of large retailers, such as Costco and Real Canadian Superstore, as well as many golf courses.



ALLVISION